

## INTRODUCTION

This electronic parts catalog provides serviceable parts information for the Daewoo Motor and Chevrolet **"V250 / V200 / V100 / U100 / J200 / J100 / T250 / T200 / T100 / M200 / M150"**

All data and specifications contained in this publication are based on the latest product information available at the time of print.

In order to make the best use of this electronic parts catalog, please be sure to read **"the GENERAL INFORMATION"** carefully.

**GM Daewoo Auto and Technology**  
Parts Engineering Team

## **GENERAL INFORMATION**

**I. GENERAL VIEW**

**II. MODEL & OPTION**

**III. EXPLANATION OF CATALOG COMPOSITION**

**IV. CONSTRUCTION OF VEHICLE IDENTIFICATION NUMBER**

**V. ENGINE IDENTIFICATION NUMBER**

**VI. TRANSAXLE IDENTIFICATION NUMBER**

**VII. TABLE OF OPTION CODE**

**VIII. ABBREVIATIONS**

## I. GENERAL VIEW



V250



V200



V100



U100



J200



J100



T200NB



T200HB



T250



T100NB



T100HB



M200



M150

## II. MODEL & OPTION

V250

### 1. MODEL

T / A	LEVEL	
M or A	I II	SX CDX

LEVEL(TRIM LEVEL)

- SX
- CDX
- . . : NOT APPLIED

T/A(TRANSAXLE)TYPE

- M : MANUAL T/A
- A : AUTOMATIC T/A(4-SPD)
- . . : COMMON

NOTE : Please be sure to read "the EXPLANATION OF CATALOG COMPOSITION"  
to find out the details on "the LEVEL COLUMN"

# V200

## 1. MODEL

T / A	LEVEL		
	M or A	I	EPICA
II		LS , LT	SX , CDX

LEVEL(TRIM LEVEL)	T/A(TRANSAXLE)TYPE
- EPICA : LS , LT	- M : MANUAL T/A
- EVANDA : SX , CDX	- A : AUTOMATIC T/A(4-SPD)
- . : NOT APPLIED	- . : COMMON

NOTE : Please be sure to read "the EXPLANATION OF CATALOG COMPOSITION" to find out the details on "the LEVEL COLUMN"

## 2. OPTION

CODE	DESCRIPTION	LEVEL	
		SX	CDX
MM9	AUTOMATIC T/A, 4 SPEED - ZF16	O	O
PC6	6.0J X 16", ALLOY	.	O
PG9	6.0J X 15", ALLOY	O	B
JL9	ABS(4WHEEL)	O	O
JTC	TCS WITH ABS	O	O
GSA	GAS SHOCK ABSORBER	O	O
UXA	SPEED SENSITIVE POWER(SSPS)	.	O
C59	UNCOMPLETED AIR CON FOR MANUAL	O	O
C15	FULL AUTO AIR CON	O	O
C11	DEFROSTER-INTERLOCKING	O	O
UBE	EL CLUSTER-KILOMETERS	.	O
UBF	EL CLUSTER-MILES	.	O
D38	ECM MIRROR	.	O
AG3	POWER SEAT	O	O
XM3	LUMBAR SUPPORT	O	O
C54	HEATING MAT,DRIVER	.	O
C58	HEATING MAT,PASSENGER	.	O
W6R	LEATHER COVERING	O	O
WGR	WOOD GRAIN TRIM	O	O
AJ3	AIR BAG(DR)	O	B
AJ7	AIR BAG(CO-DR)	O	O
AJ8	SIDE AIR BAG(DR&CO-DR)	O	O
A10	SOLAR CONTROL GLASS	O	O
CF6	SUN ROOF-POWER	O	O
DM4	POWER FOLDING & CONTROL	.	O
DMA	2WAY MIRROR	O	B
W8N	RDS W/IN-DASH 5CDC	O	O
U93	SPEAKER 6EA	O	B
ARD	AUDIO REMOCON(S/W)STEERING WHEEL	O	O

O : OPTION      B : BASE      . : NOT APPLIED

# V100

## 1. MODEL

T / A	LEVEL	
M or A	I II	SX CDX

LEVEL(TRIM LEVEL)      T/A(TRANSAXLE)TYPE  
- SX                      - M : MANUAL T/A  
- CDX                     - A : AUTOMATIC T/A(4-SPD)  
- . : NOT APPLIED      - . : COMMON

NOTE : Please be sure to read "the EXPLANATION OF CATALOG COMPOSITION"  
to find out the details on "the LEVEL COLUMN"

## 2. OPTION

CODE	DESCRIPTION	LEVEL	
		SX	CDX
L90	2.2DOHC ENGINE	O	O
ML9	4 SPEED AUTOMATIC T/A(ZF)	O	O
ML4	4 SPEED AUTOMATIC T/A(AISIN)	O	O
U12	BRAKE T/A SHIFT INTERLOCK	O	O
PG9	ALLOY WHEEL	O	B
C15	FULL AUTO AIR CONDITIONER	.	O
C54	HEATING MAT-DIRVER	.	O
C58	HEATING MAT-PASSENGER	.	O
W6R	SEAT COVERING-LEATHER(POWER)	.	O
K30	CRUISE CONTROL	O	O
CF6	SUN ROOF-POWER	O	O
UP1	CD CHANGER	O	O

- O : OPTION  
- B : BASE  
- . : NOT APPLIED

# U100

## 1. MODEL

BODY		LEVEL	ENGINE	TRANSAXLE
5DOOR M P V	I	S E / B	1.6 DOHC / 1.8 SOHC	MANUAL : 5 SPEED
	II	S X / L S	1.6 DOHC / 1.8 SOHC	AUTOMATIC : 4 SPEED (ZF16)
	III	CDX / L T	2.0 DOHC	

\* MPV : Multi Purpose Vehicle

NOTE : Please be sure to read "the EXPLANATION OF CATALOG COMPOSITION" to find out the details on "the MODEL COLUMN".

## 2. OPTION

CODE	DESCRIPTION	TRIM LEVEL		
		SE	SX	CDX
MM9	4-SPEED AUTOMATIC T/A(ZF16)	O	O	O
PG9	ALLOY WHEEL,6Jx15	O	O	B
ARD	REMOTE CONTROL S/W,ON S/WHEEL	O	O	O
JL9	ANTILOCK BRAKE SYSTEM	O	O	B
C60	AIR CONDITIONER	O	O	O
C59	UNCOMPLETED A/CONDITIONER	O	O	O
C15	AIR CONDITIONING-FULL ATC	.	O	O
U63	OUT SIDE TEMPERATURE DISPLAY	.	O	O
C34	AIR FILTER	O	O	O
W6R	SEAT COVERING-LEATHER	.	O	B
C54	HEATING MAT(DRIVER SIDE)	.	O	O
C58	HEATING MAT(PASSENGER SIDE)	.	O	O
A88	2nd ROW SEAT(3 SEPARATE TYPE)	O	O	O
CAL	REMOTE KEYLESS ENTRY SYSTEM	O	O	B
UIP	ULTRASONIC INTERIOR PROTECTION	.	O	O
FAK	FIRST AID KIT PROVISION	O	O	O
FAW	WARNING TRIANGLE PROVISION	O	O	O
V86	FIRE EXTINGUISHER(BRKT ONLY)	O	O	O
TCP	TRAILER CONNECTION PROVISION	O	O	O
WCC	CD CHANGER (FOR AUDIO)	O	O	O

O : OPTION

B : BASE

. : NOT APPLIED

# J100

## 1. MODEL

ENG	T/A	BODY	LEVEL
V / 6 / 8 / W / Z	M / A / G / Z	4N / 5H / 5W	ⅴ° / ⅴ± / ⅴ²

### ENG (ENGINE TYPE)

V	1.5 DOHC
6	1.6 DOHC
8	1.8 DOHC
W	2.0SOHC
Z	2.0DOHC
.	COMMON

### T/A (TRANSAXLE TYPE)

M	MANUAL
A	AUTOMATIC(ALL)
G	AUTOMATIC(GMPT)
Z	AUTOMATIC(ZF)
.	COMMON

### BODY (BODY TYPE)

4N	4DOOR NOTCHBACK	B	APPLIED
5H	5DOOR HATCHBACK	.	NOT APPLIED
5W	5DOOR STATION WAGON	.	NOT APPLIED

### LEVEL (TRIM LEVEL)

I	S	S	STANDARD EQUIPMENT
II	SX	O	OPTINAL EQUIPMENT
III	CDX	A	AVAILABLE EQUIPMENT
		.	FOR SPECIFIC COUNTRY
		.	NOT APPLIED

NOTE : Please be sure to read "EXPLANATION OF CATALOG COMPOSITION" to find out the details on "LEVEL" column.

## 2. OPTION

CODE	DESCRIPTION	LEVEL		
		ⅴ°	ⅴ±	ⅴ²
ML9	4 SPEED AUTOMATIC T/A(ZF14)	O	O	O
PG4	ALLOY WHEEL,5.5Jx14	.	O	O
JL9	ANTILOCK BRAKE SYSTEM	O	O	O
C60	AIR CONDITIONER	O	O	O
C59	UNCOMPLETED A/CONDITIONER	O	O	O
C15	AIR CONDITIONING-FULL ATC	.	.	O
C34	AIR FILTER	O	O	O
W6R	SEAT COVERING-LEATHER	.	O	O
CF6	SUN ROOF, POWER	O	O	O
UN1	R/CASSETTE(MECH),25Wx2CH	O	O	O
UN6	R/CASSETTE(LOGIC),25Wx4CH	O	O	O
UP1	CD CHANGER*	O	O	O
CAL	CAR ALARM SYSTEM	O	O	O
ABF	AIR BAG SYSTEM-DUAL	O	O	O
AJ3	AIR BAG SYSTEM-DRIVE SIDE	O	O	O

\* : EXCEPT HATCHBACK

O : OPTION  
 B : BASE  
 . : NOT APPLIED



# J200

## 1-1. MODEL : CHEVROLET OPTRA / NUBIRA / LACETTI

BODY	LEVEL		ENGINE	TRANSAXLE
4 Door Notchback	I	BS (BASE)	1.4 DOHC	5 SPEED M/T
			1.6 DOHC	
4 Door Hatchback	II	LS	1.4 DOHC	
5 Door S / Wagon			1.6 DOHC	4 SPEED A/T, (ZF)
	III	LT	1.8 DOHC	
			1.4 DOHC	
			1.6 DOHC	
			1.8 DOHC	

## 1-2. MODEL : GM DAEWOO NUBIRA / LACETTI

BODY	LEVEL		ENGINE	TRANSAXLE
4 Door Notchback	I	SE	1.4 DOHC	5 SPEED M/T
			1.6 DOHC	
4 Door Hatchback	II	SX	1.4 DOHC	
5 Door S / Wagon			1.6 DOHC	4 SPEED A/T, (ZF)
	III	CDX	1.8 DOHC	
			1.4 DOHC	
			1.6 DOHC	
			1.8 DOHC	

NOTE : Please be sure to read "the EXPLANATION OF CATALOG COMPOSITION" to find out the details on "the MODEL COLUMN".

## 2. OPTION

CODE	DESCRIPTION	TRIM LEVEL		
		B S	L S	L T
L14	1.4 DOHC 4 CYL MPI (F14D)	O	O	O
L44	1.6 DOHC 4 CYL MPI (F16D)	B	B	.
L84	1.8 DOHC 4 CYL MPI (H18D)	.	O	B
XSM	SIEMENS	B	B	O
XDP	DELPHI	.	O	B
R91	OCTANE NO.91	O	O	O
MG5	D16 5 SPEED M/T, MODIFY C/R	O	O	O
ML4	81-40LE 4SPEED A/T, ELEC. (AISIN)	O	O	.
MM9	4HP16E 4SPEED A/T, ELEC. (ZF)	.	O	O
GM5	AXLE RATIO (3.750) A/T	O	O	.
G38	AXLE RATIO (3.945) A/T	O	O	O
PG9	WHEEL 6J x 15 - ALLOY	O	O	O
JTC	TCS + ABS	.	O	O
N37	TILTABLE & TELESCOPIC	O	O	B
UXA	SSPS (SPEED SENSITIVE POWER STEERING)	.	.	O
C60	MANUAL AIR CONDITIONING	O	O	O
C15	A/C FULL ATC (W/ O/SIDE TEMP. DISPLAY)	.	O	O
C34	AIR FILTER	O	O	O
C35	REAR HEATING DUCT	O	O	O
XLP	LEATHER PACKAGE	.	O	O
WGR	WOOD GRAIN	.	O	B

**T250 / T200****KALOS****1. MODEL**

DRIVE	BODY	LEVEL	
L / R	4N / 2H / 4H	I II III	S SE SX

■ DRIVE TYPE

- L : Left hand drive
- R : Right hand drive

■ BODY TYPE

- 4N : 4 Door Notchback
- 4H : 4 Door Hatchback

NOTE : Please be sure to read "the EXPLANATION OF CATALOG COMPOSITION"  
to find out the details on "the LEVEL COLUMN"

**AVEO ( T-250 )****1. MODEL**

BODY	LEVEL	ENGINE	TRANSAXLE
4 DOOR Notchback	B	1.4 DOHC 1.5 SOHC 1.6 DOHC	5 SPEED M/T  4 SPEED A/T (AISIN)
	L S		
	L T		

NOTE : Please be sure to read "the EXPLANATION OF CATALOG  
COMPOSITION" to find out the details on "the MODEL COLUMN".

# T100

## 1. MODEL

ENGINE	T/A	BODY	LEVEL
C / Y / V / 6	M / A	4N / 3H / 5H	I / II / III

### ENG (ENGINE TYPE)

C	1.4 SOHC
Y	1.5 SOHC
V	1.5 DOHC
6	1.6DOHC
.	COMMON

### TRN (TRANSAXLE TYPE)

M	MANUAL
A	AUTOMATIC
.	COMMON

### BODY (BODY TYPE)

4N	4DOOR NOTCHBACK
3H	3DOOR HATCHBACK
5H	5DOOR HATCHBACK

### LEVEL (TRIM LEVEL)

I	S
II	SE
III	SX
.	NOT APPLIED

NOTE : Please be sure to read "EXPLANATION OF CATALOG COMPOSITION" to find out the details on "LEVEL" column.

## 2. OPTION

CODE	DESCRIPTION	BODY			LEVEL		
		4 N	3 H	5 H	I	II	III
A31	WINDOW-POWER,FRONT&REAR	B	.	B	.	O	O
A32	WINDOW-POWER,FRONT	B	B	B	O	O	B
ABF	AIR BAG-DUAL	B	B	B	O	O	O
AJ3	AIR BAG-DRIVER SIDE ONLY	B	B	B	O	O	O
AU3	CENTRAL DOOR LOCK	B	B	B	O	O	O
C59	UNCOMPLETED AIR CONDITIONER	B	B	B	O	O	O
C60	AIR CONDITIONER	B	B	B	O	O	O
CAL	CAR ALARM & ANTI-THEFT	B	B	B	O	O	O
CF6	SUN ROOF,POWER	B	B	B	O	O	O
JL9	ANTILOCK BRAKE SYSTEM	B	B	B	O	O	O
L13	1.4L SOHC ENGINE	B	B	B	O	O	.
ML4	4 SPEED AUTOMATIC T/A	B	B	B	O	O	O
N40	POWER STEERING	B	B	B	O	O	B
T45	REAR SPOILER	.	B	B	.	.	O
U83	SPEAKER-COAXIAL 2 WAY	B	B	B	.	O	O
US8	SPEAKER-STANDARD	B	B	B	O	O	B
UNA	CASSETTE(MECH),7WX2CH(AKF-4331)	B	B	B	O	O	O
UN1	CASSETTE(MECH),25WX2CH(AKF-4036)	B	B	B	O	O	O
UN6	CASSETTE(LOGIC),25WX4CH(AKF-0816)	B	B	B	.	O	O
W8V	CD PLAYER	B	B	B	.	O	O

O : OPTION  
 B : BASE  
 . : NOT APPLIED

## M200 / M150

### 1. MODEL

#### 1) MATIZ(M100), MATIZ II (M150)

DRIVE	ENGINE	T/A	CLUTCH	BODY	LEVEL	
L / R	0.8 SOHC	MANUAL	M / A	5DOOR HATCH BACK	I	S
		5 SPEED			II	SE
		AUTOMATIC			III	CD
		4 SPEED			IV	SE+

#### ■ DRIVE TYPE

- L : Left hand drive
- R : Right hand drive

#### ■ CLUTCH TYPE

- M : Manual clutch
- A : Automatic clutch

NOTE : Please be sure to read "the EXPLANATION OF CATALOG COMPOSITION"  
to find out the details on "the LEVEL COLUMN"

#### 2) MATIZ(M200)

DRIVE	ENGINE	T/A	BODY	LEVEL
L / R	0.8 SOHC 1.0 SOHC	MANUAL	5 DOOR HATCH BACK	S(I)
		5 SPEED		SE(II)
		AUTOMATIC 4 SPEED		SX(III)

#### ■ DRIVE TYPE

- L : Left hand drive
- R : Right hand drive

### III. EXPLANATION OF CATALOG COMPOSITION

① 1111 ENGINE UNIT(SOHC) ②																							
I T C	KEY NO.					PART NAME												OPTION	REMARKS				
	PART NO.	C H G	D R V	E N G	T / A	MODEL ⑦						L / R	Q T Y	PNC	P / C O D E	EFFECTIVE POINT							
						BODY			LEVEL							VIN1				VIN2			
						4N	3H	5H	I	II	III					FROM	TO			FROM	TO		
	④ 1	ENGINE A ③											⑨	⑩	⑮	⑬		⑪		⑧	⑫		
<input type="checkbox"/>	96184185	.	C..	M.	B	B	B	S	O	.		1	100001	BJ							-XCA		
<input type="checkbox"/>	96352330	⑭	.	C..	M.	B	B	B	A	A	.	1	100001	B6							&XCA		
	96350294	.	Y..	M.	B	B	B	O	S	S		1	100001	HJ							-XCA		
<input type="checkbox"/>	96352335	.	Y..	M.	B	B	B	A	A	A		1	100001	H6							&XCA		
	96350292	.	Y..	A.	B	B	B	O	O	O		1	100001	HL							-XCA		
	96352336	.	Y..	A.	B	B	B	A	A	A		1	100001	H7							&XCA		
	⑥ 2	SHACKLE-ENG TRANSPORT																					
<input type="checkbox"/>	90076951		CY.	..	B	B	B	S	S	S		1	110021										
	⑤ 3	BOLT																					
<input type="checkbox"/>	02865535		CY.	..	B	B	B	S	S	S		1	110021									M8X22	

#### \*\* EXPLANATION OF CATALOG COMPOSITION

- |                           |                   |                                  |
|---------------------------|-------------------|----------------------------------|
| ① GROUP NO.               | ② GROUP NAME      | ③ PART NAME                      |
| ④ KEY NUMBER(FIG.NO)      | ⑤ PART NUMBER     | ⑥ ITC (Interchangeability CODE)  |
| ⑦ MODEL                   | ⑧ OPTION          | ⑨ L/R                            |
| ⑩ QT'Y (Quantity)         | ⑪ EFFECTIVE POINT | ⑫ REMARKS                        |
| ⑬ PART IDENTIFICATON CODE | ⑭ CHANGE CODE     | ⑮ PNC (Part Number Control Code) |

### 1. GROUP NO.

The 1st one digit indicates " MAIN GROUP NO." and next three digits indicate " SUB GROUP NO."

### 2. SUB GROUP NAME

This indicates the name of sub group within the main group.

### 3. PART NAME

Part names are shown in multi-language  
(example)

(E).....English (F).....French  
(D).....German (S).....Spanish

### 4. KEY NUMBER

Key number corresponds with the reference number on the illustration.  
Key number is not always sequenced.

### 5. PART NUMBER

The number is assigned to each part.

### 6. ITC(INTERCHANGEABILITY CODE)

When any part number has been changed due to design modification, this indicates the interchangeability between two part numbers.

\*Interchangeability symbols

Y : The old and new parts are interchangeable.

N : The old and new parts are not mutually interchangeable.

O : The new part can be used for the old part but the reverse is not possible.

### 7. MODEL

This column indicates Drive Type, Engine Type, Transaxle Type, Body Type, Clutch Type, Trim Level.

\*Drive type

- L : Left hand dirve
- R : Right hand dirve
- . : Common

\* Engine type

- . : Common
- Y : 1.5 SOHC
- V : 1.5 DOHC
- 6 : 1.6 DOHC
- W : 2.0 SOHC
- Z : 2.0 DOHC
- C : 1.4 SOHC

\* Trim level.

- EVANDA : SX/CDX
- LEGANZA : SX/CDX
- TACUMA : SE/SX/CDX
- NUBIRA : SE/SX/CDX
- LANOS : S/SE/SX
- LACETTI : S/SX/CDX
- MATIZ : S/SE/CD
- MATIZ(M200) : S/SE/SX

"LEVEL" column indicates the expression of applicable trim level.

S : Standard equipment.

O : Option equipment.

A : Available equipment for the special package according to the area regulation.

. : Not applied

\* Transaxle type

- M : Manual transaxle
- A : Automatic transaxle (All)
- G : Automatic transaxle (GMPT)
- Z : Automatic transaxle (ZF)
- . : Common

\* Clutch type

- M : Manual clutch
- A : Automatic clutch
- . : Common

\* Body type

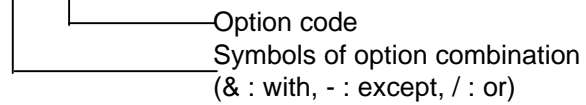
- 3 H : 3 Door Hatchback
- 4 N : 4 Door Notchback
- 5 H : 5 Door Hatchback
- 5W : 5 Door Station Wagon

### 8. OPTION

This column indicates option code.

Refer to "VI. TABLE OF OPTION CODE "

ex) ○ ○ ○ ○



### 9. L/R

This column indicates mounting position of part.

L : Left hand side

R : Right hand side

### 10. Q'TY

This column indicates the quantity required per sub-group.

The quantity is normally shown by numeric or by symbol as bellow.

A : As required quantity.

### 11. EFFECTIVE POINT

This column indicates the " VIN " in production.

### 12. REMARKS

Supplementary or reference information is given in this column.

Specification, Use, Type, Applicable Country, etc.

### 13. PART IDENTIFICATION CODE

This column indicates part identification code that is marked with two characters. Part identification code will help you in discrimination the parts easily. But, all parts will not always carry the part identification code

### 14. CHG (CHANGE)

This column indicates code of the changed parts.

CR : Correction

AD : Addition

DL : Deletion

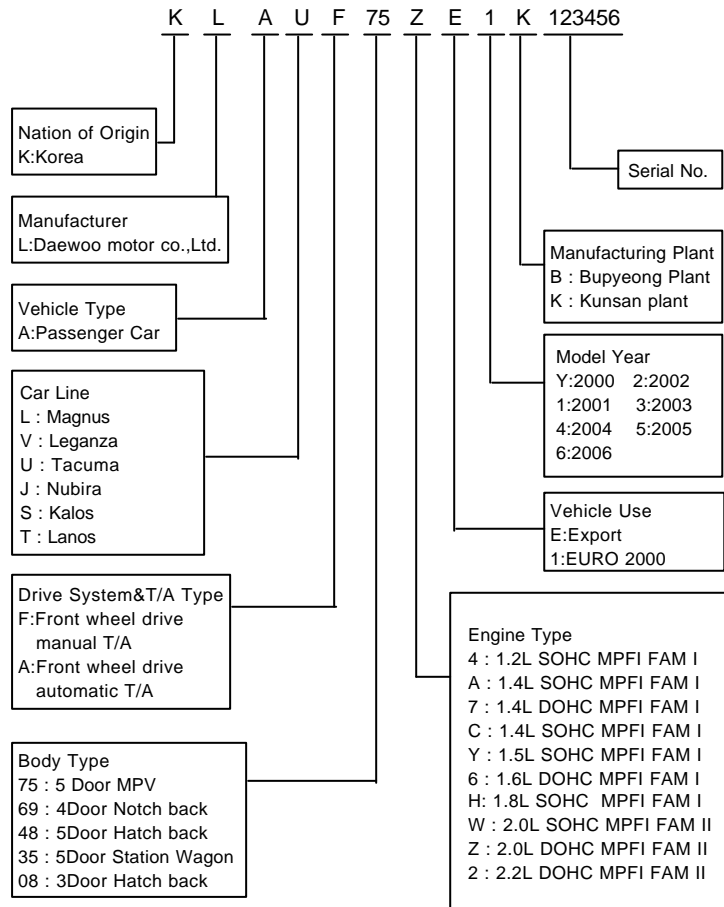
MD : Modification

### 15. PNC (Parts Number Control Code)

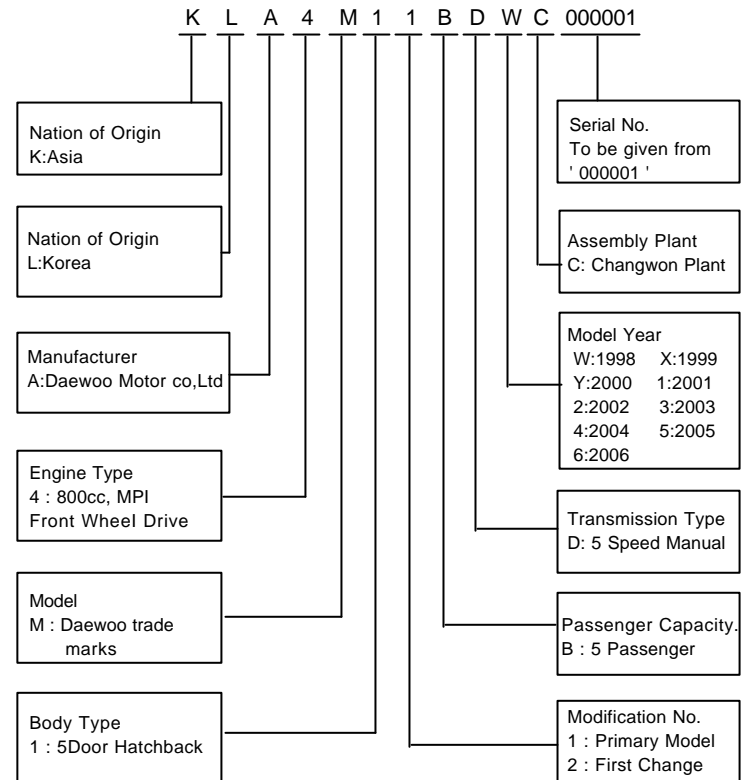
This column indicates the code of parts number control.

# IV. CONSTRUCTION OF VEHICLE IDENTIFICATION NUMBER

V250 / V200 / V100 / U100 / J200 / J100 / T250 / T200 / T100



M200 / M150

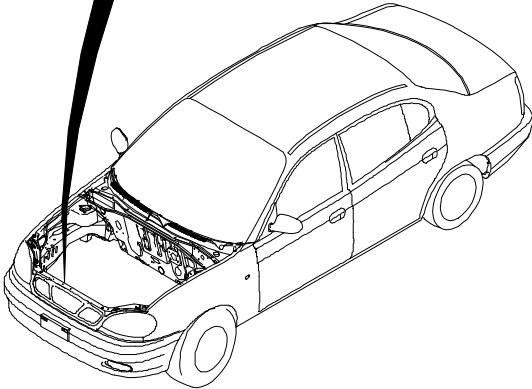




**LOCATION OF VEHICLE IDENTIFICATION NUMBER**

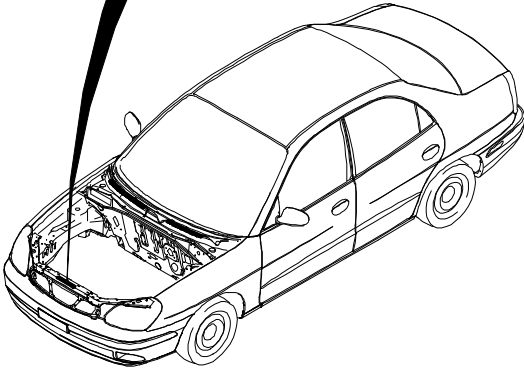
**V100**

<b>DEAWOO MOTOR CO.,LTD.</b>	
TYPE APPROVAL NO.	<input type="text"/>
<b>VEHICLE IDENTIFICATION NO.</b>	<b>KLAVF69ZEXB123456</b>
MODEL	<input type="text"/>
ENGINE TYPE	<input type="text"/>
BODY TYPE	<input type="text"/>



**J100**

<b>DEAWOO MOTOR CO.,LTD.</b>	
TYPE APPROVAL NO.	<input type="text"/>
<b>VEHICLE IDENTIFICATION NO.</b>	<b>KLAVF69ZEXB123456</b>
MODEL	<input type="text"/>
ENGINE TYPE	<input type="text"/>
BODY TYPE	<input type="text"/>



V250

**DAEWOO MOTOR CO.,LTD.**

TYPE APPROVAL NO.

VEHICLE  
IDENTIFICATION NO.

**K L A L F 6 9 Z E 3 B 1 2 3 4 5 6**

MODEL

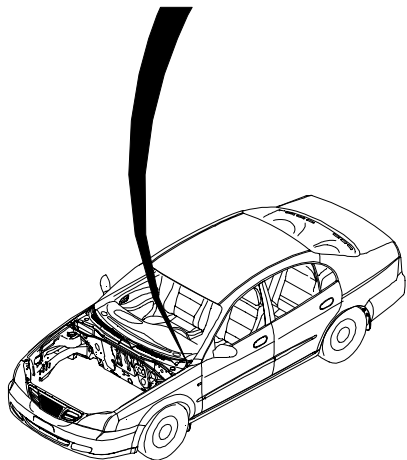
BODY COLOR

ENGINE TYPE



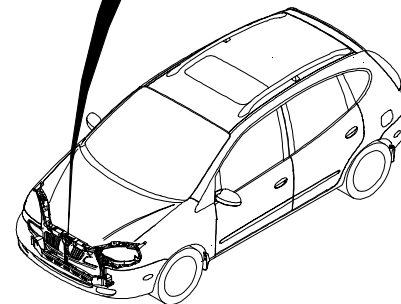
V200

<b>DAEWOO MOTOR CO.,LTD.</b>	
TYPE APPROVAL NO.	<input type="text"/>
VEHICLE IDENTIFICATION NO.	<b>K L A L F 6 9 Z E 3 B 1 2 3 4 5 6</b>
MODEL	<input type="text"/>
ENGINE TYPE	<input type="text"/>
BODY COLOR <input type="text"/>	



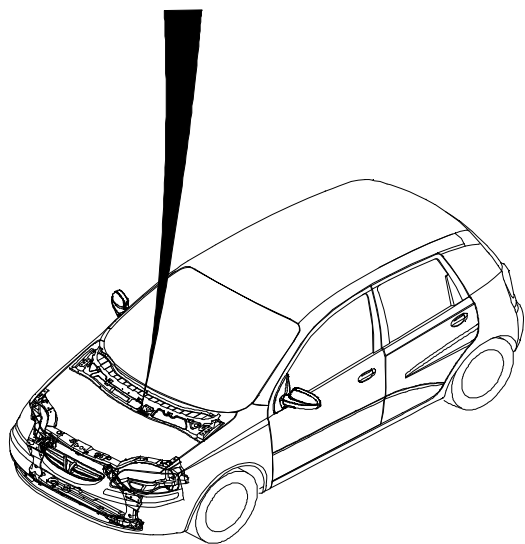
U100

<b>DAEWOO</b> DAEWOO MOTOR CO.,LTD	1877KG	Body color <b>11U</b>
	3377KG	
* KLAUF75ZE1K123456 *	1 - 1050KG	<input type="text"/>
	2 - 985KG	



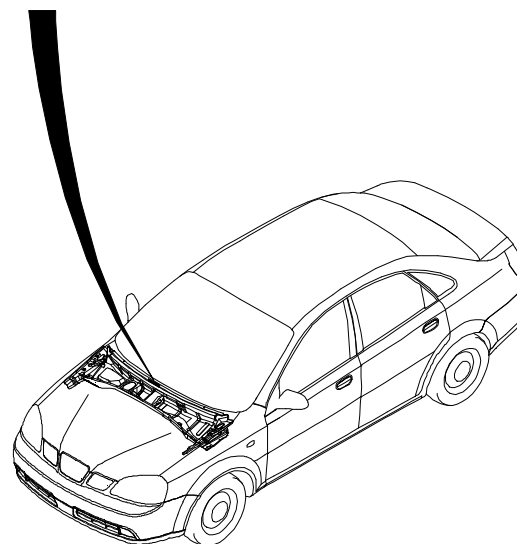
T200

K L A S F 69 Y E 2 B 123456



J200

K L A N F 19 6 E 3 K 123456

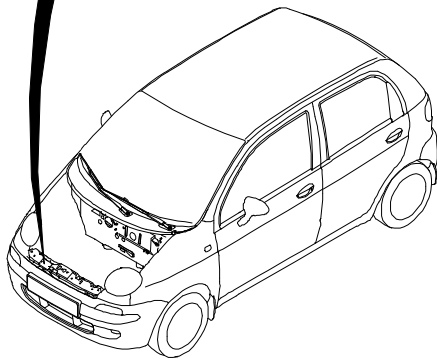


**M100 / M150**

**DAEWOO**

DAEWOO HEAVY INDUSTRIES LTD.

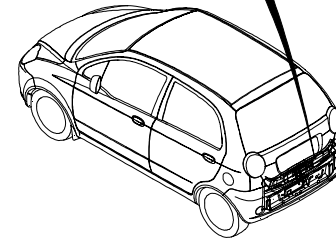
MODEL **Y4A11**  
TYPE APPROVAL NO. **1-XXXX-XXX**  
VEHICLE IDENTIFICATION NO.  
**KLY4A11BDWC000001**  
ENGINE TYPE **F8CV**  
BODY COLOR **80L**



**M200**

**GM DAEWOO Auto & Technology Company**

MODEL **A4M11**  
TYPE APPROVAL NO. **1-XXXX-XXX-XXX**  
VEHICLE IDENTIFICATION NO.  
**KL1KF484L5C000001**  
ENGINE TYPE **F8CV**  
BODY COLOR **80L**

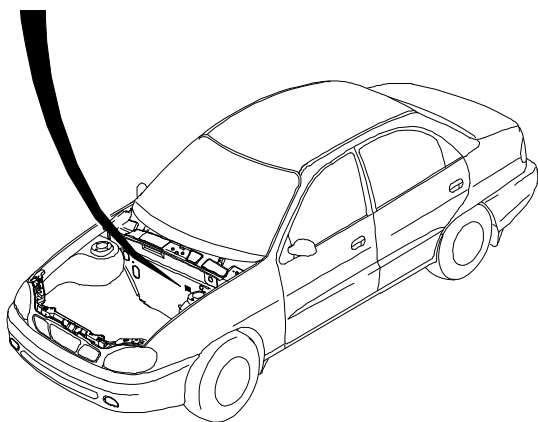


T100

**DAEWOO MOTOR CO.,LTD.**

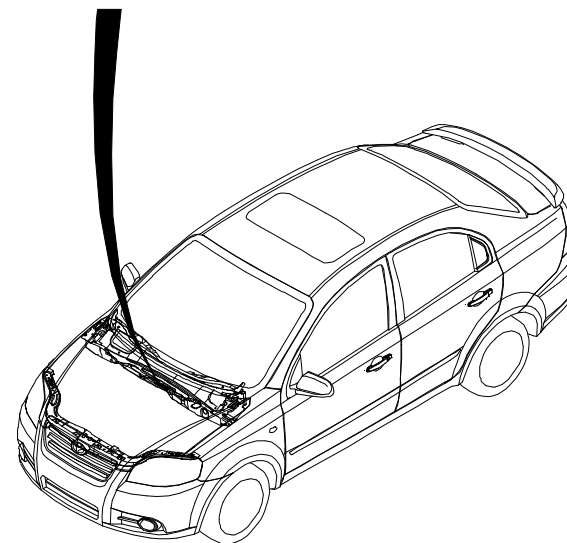
KLATF69YEVB123456

1 - **KG**  
2 - **KG**



T250

**K L A S F 69 A 1 3 B 123456**



# V. ENGINE IDENTIFICATION NUMBER

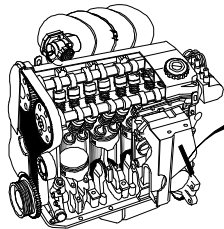
## FAMILY [I] TYPE 1

A 15 D M N 123456 B

Example)

- 1.3 SOHC
  - A13SMS 123456B
- 1.5 SOHC
  - A15SMS 123456B
- 1.5 DOHC
  - A15DMS 123456B
- 1.6 DOHC
  - A16DMS 123456B

Engine License  
 A : IN LINE  
 V : V TYPE  
 Engine  
 Displacement  
 13 : 1.3L  
 15 : 1.5L  
 16 : 1.6L  
 Cam Mechanism  
 D : DOHC  
 S : SOHC  
 Injection Type  
 E : MPI  
 L : LPG  
 Compress Ratio  
 N : 9.0<N<9.5  
 S : 9.5<S<10.0  
 Serial No.  
 Plant Location  
 B : BUPYONG

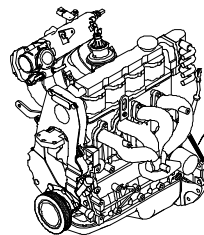


A16DMN 123456B

## FAMILY [I] TYPE 2

F 18 S 2 123456 K

Engine License  
 F : FAM I  
 Engine  
 Displacement  
 18 : 1.8L  
 Cam Mechanism  
 D : DOHC  
 S : SOHC  
 Injection Type  
 2 : MPI  
 Serial No.  
 Plant Location  
 K : KOREA



F18D2 123456K

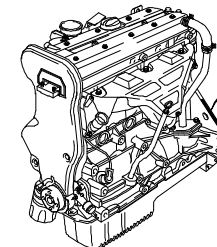
## FAMILY [II] TYPE

C 20 S E D 123456

Example)

- 1.8
  - 2.0 LPG
    - C20NL 123456
  - 2.0 DOHC
    - C20SED 123456

Exhaust Emission  
 Limit  
 C : Domestic,  
 Others  
 X : Europe  
 T : North America  
 Engine  
 Displacement  
 18 : 1.8L  
 20 : 2.0L  
 22 : 2.2L  
 Cam Mechanism  
 N : SOHC  
 S : DOHC  
 Injection Type  
 E : MPI  
 L : LPG  
 Plant Location  
 D : Daewoo Motor  
 co., LTD



C20SED 123456

## VI. ENGINE IDENTIFICATION NUMBER

XK TYPE 1

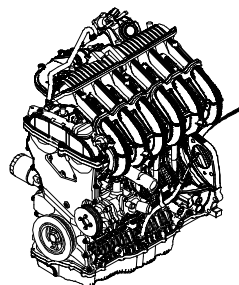
**X 25 D 1 123456 K**



Engine License  
X : XK-6 2.0/2.5  
V : V TYPE  
Engine  
Displacement  
20 : 2.0L  
25 : 2.5L  
Cam Mechanism  
D : DOHC  
S : SOHC

Serial No.

Plant Location  
K : Korea

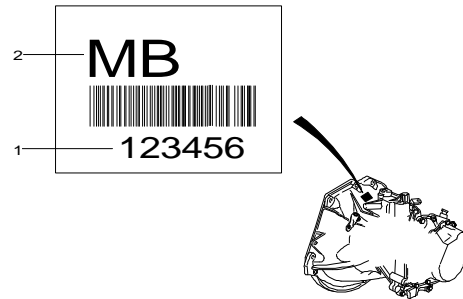


X20D1 123456K



# VI. TRANSAXLE IDENTIFICATION NUMBER

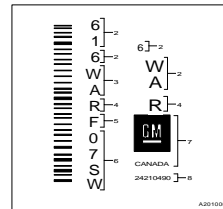
## MANUAL TRANSAXLE



Serial No.

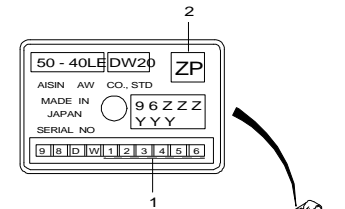
PART IDENTIFICATION CODE

## AUTOMATIC TRANSAXLE TYPE [GMPT]



- 1 Assembly plant ( Windsor, Canada)
- 2 Model Year (1996)
- 3 Broadcast Code
- 4 Model Name (4T40E)
- 5 Update Level
- 6 Sequential Number
- 7 Manufacturer
- 8 Part Number

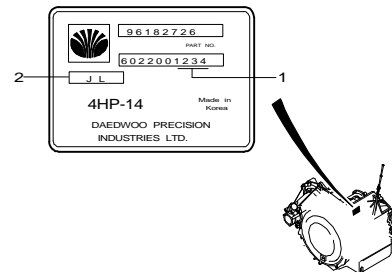
## AUTOMATIC TRANSAXLE TYPE [AISIN]



Serial No.

PART IDENTIFICATION CODE

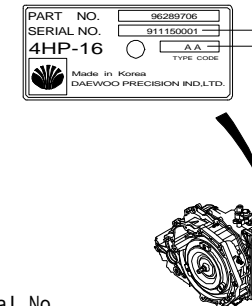
## AUTOMATIC TRANSAXLE TYPE [ZF14]



Serial No.

PART IDENTIFICATION CODE

## AUTOMATIC TRANSAXLE TYPE [ZF16]



Serial No.

PART IDENTIFICATION CODE

## VII. TABLE OF OPTION CODE

CODE	DESCRIPTION	CODE	DESCRIPTION	CODE	DESCRIPTION	CODE	DESCRIPTION
01U	TWO TONE-UPR 53U,LWR 47U	34U	MODERN GREEN	63U	SATIN BEIGE	99A	WAX-SHIPPING,KHS5075(DWPM)
02L	DIAMOND WHITE PEARL-MICA	35U	MINT GREEN	64U	RED BROWN-MICA	99B	WAX-SHIPPING,UL5000(DWPM)
02U	TWO TONE COLOR-LOWER	36U	GILT GREEN	65N	PRIMER-LIGHT GREY,OTR	A01	WINDSHIELD-W/SHADE BAND
03U	AQUA GREEN	37U	DANUBE GREEN	65U	ELEGANT BEIGE	A02	WINDSHIELD-2 PIECE,UPR TIN
04U	URBAN GREY	38L	POLYNESIAN GREEN	67U	GOLDISH BEIGE	A03	WINDSHIELD-2 PIECE,CLEAR
05U	MISTY BLUE	38U	CYBER GREEN	68U	MELANGE BEIGE	A05	WINDOW-TINTED,W/S W/O BAND
06U	FLAME RED	395	2 TONE-U:T/GREEN,L:S/SLVR	69U	AUTUMN BROWN-MICA	A06	GLASS-SOLAR CTRL,W/SHIELD
105	2 TONE-U:C/WHITE,L:S/SLVR	39L	GREEN-GREY,METAL 139	6G2	REINFORCEMENT-ROOF PANEL	A07	WINDOW-CLEAR,W/S CLR BAND
10L	CASABLANCA WHITE	39U	TROPIC GREEN	70U	RED ROCK	A08	WINDOW-CLEAR,W/S TIN BAND
10N	PRIMER COATING	40M	FIRE FIGHTING TRUCK-SHORT	725	2 TONE-U:O/RED,L:S/SLVR	A09	HYDROPHOBIC-GLASS
11U	GALAXY WHITE-SOLID	40U	SHERWOOD GREEN	72U	ORANGE RED-PALIOCROM	A10	GLASS-SOLAR CONTROL
12U	OCEAN BLUE	40V	FROST GREEN-METALLIC	73L	SUPER RED	A11	WINDOW-TINTED,ALL
13U	WHITE PEARL-MICA	41U	GRASS GREEN	73U	DARK WINE PURPLE-MICA	A15	WINDOW-TINTED,ABSORB,ALL
15U	APPLE GREEN	42I	BROWN-INTERIOR	74U	SPINEL RED-MICA	A1S	2ND AIR SYSTEM
16U	ELECTRIC YELLOW	42U	DEEP BLUISH GREEN-MICA	75U	ORANGE COPPER	A1T	WARM AIR SYSTEM
17U	MYSTIC BEIGE	435	2 TONE-U:L/E GREEN,L:S/SLV	76L	CRIMSON RED-LOWER	A22	WINDSHIELD-CLEAR
185	JAZZ BLUE-1C1B/STONE SILVE	44U	GENTEEL GREEN-MICA	77U	ACTIVE RED	A25	WINDSHIELD-ABSORB,S/UPR
18U	JAZZ BLUE 1C1B	44V	KHAKI GREEN	78U	COKE-RED	A30	WINDOW-POWER,DELETE
19U	JAZZ BLUE 2C1B	45U	MOSSWOOD GREEN-MICA	79U	SANDDRIFT GREY,MET	A31	WINDOW-POWER OPER,FRT&RR DR
20I	BLUE-INTERIOR	46U	LEAF GREEN	80I	BLACK-INTERIOR	A32	WINDOW-POWER OPERATED,FRT
20U	PACIFIC BLUE	47U	POSEIDON BLUE,MICA	80N	PRIMER-WHITE	A34	WINDOW-MANUAL OPERATED,FRT
225	2 TONE-U:T/BLUE,L:S/SLVR	48U	BRILLIANT GREEN	80U	LIGHT OPAL GREY	A50	SEAT-FRONT,BKT,SPORT
22I	PURPLE-INTERIOR	49U	YELLOW GREEN	81I	ANTHRACITE BLACK-INTERIOR	A57	TURNING FUNCTION-FRT SEAT
22M	TEAL BLUE	505	Z TONE-U:C/REP,L:S/SLVR	81U	STREAMLINE GREY-MICA	A66	WINDOW-POWER,1 TOUCH,DOWN
22U	AQUA BLUE	50U	CITY RED	82I	GREY-INTERIOR	A67	ANTENNA-WINDSHIELD,RADIO
23I	DARK PURPLE-INTERIOR	51U	GOLDEN YELLOW	83L	GRANADA BLACK-MICA	A72	WINDOW-TINTED,DEEP RR,SD
23U	CARIBBEAN BLUE-CROM	52U	HIGHWAY YELLOW-SOLID	83U	SKY GREY-METALLIC	A74	BELT-SEAT,PRETEN,FRT,VAR3
24L	MEXICO RED-SOLID	53U	KANDINSKY RED,MICA	84I	GREY-INTERIOR,TWO TONE	A81	TRUNK LID OPENING-CABLE
24U	REGATTA BLUE-MICA	54U	SUNSET ORANGE	84U	MAUVE GREY-MICA	A82	TAILGATE OPENING-KEY TURN
255	2 TONE-U:C/BLUE,L:S/SLVR	55U	LINEN BEIGE,MET	85I	ANTHRACITE-INTR,TWO TONE	A88	SEAT-REAR,DELUXE
25U	COBALT BLUE	56U	LEMON YELLOW	85U	DARK SAPPHIRE	A89	SEAT-REAR,STANDARD
26U	HARVARD BLUE-MICA	57L	TWINKLE BEIGE-MET 2	86U	STORM GREY	A95	GLOVE BOX-OPENING W/O KEY
26V	IMPERIAL BLUE	57U	ORANGE	87U	PEARL BLACK	A99	LOCK-GLOVE BOX
28U	ROYAL BLUE	595	PEACH ORANGE/STONE SILVER	88U	DARK DENIM GREY,MICA	AA1	WINDOW-TINTED, W/O BAND
29U	SKY BLUE	59U	PEACH ORANGE	89U	COLOR-SPECIAL ORDER SALES	AAC	W/HEIGHT ADJ-SEAT BELT
2G0	SINGAPORE-MANDATORY	5M1	LIBYA-MANDATORY	90U	IVORY	AAF	RES PROV-S/BELT,H/ADJ,FRT
2G3	EASTERN EUROPE-REGULATION	60I	BEIGE-INTERIOR	91L	SILVER STONE-METALLIC	AAQ	ADJUST-PASS SEAT,PWR,4WAY
2G5	CANADA-MANDATORY	60M	MIKE BEIGE	91U	OAK GREEN,MICA	AAR	KNEE BOLSTER, FOAM TYPE
30U	MIDNIGHT BLUE-MICA	60U	BRIGHTON GOLD	92L	CASHMERE BEIGE-METALLIC	ABF	AIR BAG-DRIVE&PASS,FRT
31U	DENIM BLUE	60V	RICH GOLD-METALLIC	92U	POLY SILVER-METALLIC	ABH	AIR BAG SYSTEM-ADVANCED
32U	PASTEL BLUE	61I	BEIGE-INTERIOR,TWO TONE	93U	OLIVE SILVER-METAL	ABJ	AIR BAG SYSTEM-DUAL STAGE
33L	STONE SILVER	61U	MOONSTONE BEIGE	94U	ZEST BROWN,MET	ABK	KNEE BOLSTER,LH/RH
33U	SPORTS BLUE	62U	KHAKI BEIGE-MICA	95U	DOVE SILVER	ABL	KNEE BOLSTER,DRIVE SIDE

## VII. TABLE OF OPTION CODE

CODE	DESCRIPTION	CODE	DESCRIPTION	CODE	DESCRIPTION	CODE	DESCRIPTION
ABZ	WINDOW-POWER OPER,SAFETY	AMP	SEAT-RR,FIXED,W/HEADREST	ATA	SEAT COVERING-STANDARD	B23	COVER-PARK BRAKE LEVER,RR
ACR	SKISLEEVE-REAR SEAT	AN3	TRAY-SEAT,UNDER	ATB	SEAT COVERING-DELUXE	B2I	MOLDING B/S-ACCENT COLOR
AD1	REST PROVISION-CHILD,PASS	AP0	ASSIST GRIP,CO-DR SIDE	ATC	SEAT COVERING-SUPER DELUXE	B2O	MOLDING B/S-MOLDED COLOR
AE7	ADJUSTER-ST,DR,6 WAY MAN	AP1	ASSIST GRIP	ATD	SEAT COVERING-FULL CLOTH	B30	FLOOR COVERING-CARPET STD
AE8	ADJUSTER-ST,DR,8 WAY PWR1	AP3	ASSIST GRIP-REAR	ATE	SEAT COVERING-FULL CLOTH,1	B31	FLOOR COVERING-CARPT S/DLX
AG1	SEAT-L, 4WAY, POWER	AP4	COAT HOOK-REAR,W/O A/GRIP	ATF	SEAT COVERING-LEATHER	B32	FLOOR COVERING-VINYL MAT
AG3	ADJUSTER-SEAT,DR,8 WAY,PWR	AP5	SEAT-REAR,ARM REST	ATG	SEAT COVERING-CLOTH:VELVET	B33	PARTITION PNL-W/O GLASS
AG4	ADJUSTER-SEAT,DR,MANUAL	AP6	HOOK-CARGO,FRONT,SEATBACK	ATH	SEAT COVERING-STYLE	B34	PARTITION PNL-W/GLASS
AGD	ADJUSTER-SEAT,DR,DUAL,MAN	AP8	CHILD SEAT FIX PROVISION	ATJ	SEAT COVERING-SPORT	B39	LOAD FLOOR COVER-CARPET
AGS	SEAT-DR,H/ADJ SINGLE,MAN	AP9	ARMREST-RR SEAT,W/DEPOSIT	ATK	SEAT COVERING-FULL CLOTH,2	B3K	MOLDING-SIDE,TURN SIGNAL
AH5	ADJUSTER-ST,DR,8 PWR,N MEM	APA	DETENT-GEARSHIFT,T/M	ATL	SEAT COVERING-HI DELUXE	B41	LOAD FLOOR COVER-VNL MAT
AHV	REST PROVISION-BELT,ADJ,HI	APC	BELT-FRT,CO-DR,PRETENSION	ATM	SEAT COVERING-COMFORT DLX	B46	FLOOR COVER-HEEL PAD
AJ3	AIR BAG-DRIVE,FRONT	APD	BELT-FRT,DRIVE,PRETENSION	ATP	ANTI THEFT ALARM PROVISION	B58	FLOOR COVERING-CARPET DLX
AJ7	SIR-FRONT,CO DRIVE	APF	BELT-SEAT,PRETEN,FRT,VAR2	ATQ	SEAT COVERING-FULL CLOTH,3	B61	MOLDING-BODY COLOR
AJ8	AIR BAG-DR/PASS,DR,MANUAL	APP	BELT-SEAT,PRETENSIONER,FRT	ATR	SEAT COVERING-ULTRA DELUXE	B62	MOLDING-MOLDED COLOR
AJF	AIR BAG-FRT SIDE,DR	APR	ASSIST GRIP-SIDE REAR	ATT	SEAT COVERING-FULL CLOTH,4	B63	MOLDING-BODY SIDE,DLX
AK1	BELT-FRT,DRIVE,3P ELR	APS	ASSIST GRIP-REAR,2EA	ATU	SEAT COVER-SPORTY,LEATHER	B64	MOLDING-ACCENT
AK9	BELT-RR,L R/ELR & CTR/2PT	APV	ASSIST GRIP-REAR,4EA	ATW	SEAT COVER-CLOTH,TRICOT,1	B66	MOLDING-BODY SIDE,B/COLOR
AKC	BELT-FRT,CO-DR,3P ELR	APW	BELT-FRT,DRIVE,WLR	ATX	SEAT COVER-CLOTH,TRICOT,2	B68	MOLDING-BODY SIDE S/DLX
AKE	BELT-RR,ELR & CTR/3 POINT	AQ1	SEAT-2ND,BENCH AVAIL FLAT	ATY	SEAT COVER-CLOTH,WOOVEN	B6G	PLATE-SILL,ROCKER,STAINLES
AKK	BELT-RR,L R/CRS & CTR/2PT	AQ2	SEAT-2ND,SEPARATE	AU1	LOCK CONT ENT-DR&L/G GLASS	B6H	PLATE-SILL,ROCKER,PLASTIC
AKM	BELT-RR,OTR 3P ELR,W/O CLR	AQ3	SEAT-FRONT,ADJ BACK,VAR 3	AU3	LOCK-DOORS,ELECTRIC	B6I	MOLDING ROCKER-ACNT,COLOR
AKS	BELT-RR,CTR 2P MANUAL	AQ6	SEAT-FRONT,ADJ BACK	AU6	TAILGATE OPENING-ELECTRIC	B70	MOLDING-METAL PAINT
AKT	BELT-RR,CRS & CTR/3 POINT	AQ8	SEAT-FRONT,ADJ BACK,VAR 1	AU7	TAILGATE OPENING-C/REMOTE	B71	MOLDING-ROOF, BODY COLOR
AKV	BELT-FRT,DR,3P ELR,L/LIMIT	AQ9	SEAT-FRONT, ADJ BACK, VAR.2	AUL	VERRIDE DOOR LATCH	B72	MOLDING-ROOF, BLACK
AKW	BELT-FRT,CO-DR,WLR	AQA	SEAT-FRONT,STANDARD	AUS	LOCK-DR,SPEED SENSITIVE	B74	GARNISH-OSRVM INR R/L
AKY	BELT-FRT,CO-DR,3P ELR,L/LIM	AQC	SEAT-FRONT,CUSTOM	AV9	NET-CARGO, MOVABLE	B76	GARNISH-RR FLOOR MAT
AL2	BELT-FRT,3 POINT MANUAL	AQP	HEADREST-REAR SEAT,CENTER	AWL	BELT-FRT,L/R,WLR	B83	MOLDING ROCKER-MOLD,COLOR
AL3	BELT-FRT,3 POINT ELR	AQT	SEAT-3RD,BENCH FULL FLDG	AWW	NET-CARGO,FLOOR	B88	MOLDING-BODY SIDE,W/O Cr
ALA	BELT-RR,L/R 3 POINT ELR	AR1	AIR BAG-DELETE	AWX	AIR BAG-DR/PASS,FRT&ROOF	B91	MLDG-BODY SIDE,PLAS BLACK
ALF	BELT-2ND,2 POINT MANUAL	ARD	CONTROL-AUDIO,REMOTE	AY0	AIR BAG-DR/PASS,FRT&SI&RF	B92	MOLDING-B/S, WIDE
ALG	BELT-2ND,3 POINT MANUAL	ARE	ARMREST-FOLDING TYPE	AYC	HEADREST-2ND,ON PARTITION	B96	PILLAR TRIM-A
ALH	BELT-3RD,2 POINT MANUAL	ARI	NET-RR COMP,RAIL	AYF	HEADREST-NON HEIGHT ADJ	B98	AIR DAM
ALJ	BELT-3RD,3 POINT,MANUAL	AS7	BELT-FRT,3 PNT ELR,HYBRID	AYK	HEADREST-FRT,W/O TILTABLE	BA1	FLR CVR-FRT/RR/QTR:CPT-STD
AM4	SEAT-RR FIXED W/SEM	ASB	SEAT BACK POCKET	AYT	HEADREST-FRT,TILT & HEIGHT	BA2	FLR CVR-FRT/RR/QTR:CPT-DLX
AM5	SEAT-RR,FIXED	ASC	SEAT BACK POCKET-CO DRIVER	B05	BEZEL-FRT,CENTER	BA3	F/CVR-FRT:CPT-S,RR/QTR-VYL
AM6	SEAT-RR,FIXED W/SEMI HI-BK	ASE	SEAT BACK POCKET-DRIVER	B06	PILLAR TRIM-A,B LOWER	BA4	F/CVR-FRT:CPT-D,RR/QTR-VYL
AM7	SEAT-RR,FOLDING	ASF	SEAT SIDE POCKET-CO DRIVER	B07	PILLAR TRIM-A/B/C,B LOWER	BA5	FLR CVR-FRT/RR/QTR:VINYL
AM8	SEAT-RR FIXED W/SEMI VAR1	ASG	BLIND COVER - ASSIST GRIP	B10	SIDE TRIM-LUG ROOM,PLASTIC	BA6	FLOOR COVER-FRT:VINYL
AM9	SEAT-RR,SPLIT COLLAPSIBLE	ASK	BELT FRT DR/ELR CO DR/CRS	B11	BACK POCKET-FRT SEAT,LH&RH	BA7	FLOOR COVER-FRT:CARPET-DLX
AMB	SEAT-RR,S/FOLDING,HD REST	ASW	BELT-FRONT DOOR-ELR	B14	DOOR TRIM-HALF TRIM	BB3	DOOR POCKET-DRIVER
AMC	SEAT-RR,FOLDING W/HEADREST	AT3	SEAT TRIM-HALF	B15	MOLDING-ROCKER,BODY COLOR	BBB	CYLINDER UNIT-DRIVER,DR
AME	LOCK CONTROL-EMER,UNLOCK	AT8	SEAT COVERING-VINYL	B17	MOLDING-ROCKER,SPORTY	BBC	COOLING & HEATING BOX

## VII. TABLE OF OPTION CODE

CODE	DESCRIPTION	CODE	DESCRIPTION	CODE	DESCRIPTION	CODE	DESCRIPTION
BC1	INSTRUMENT PAD-STD	C25	WASHER&WIPER-BACK WINDOW	CNJ	HOLDER-SUNGLASS	DBD	SUNSHADE-DRIVE,W/O MIR
BC2	INSTRUMENT PAD-DLX	C26	WIPER-INTERMITTENT,RR,VAR2	CNT	TICKET HOLDER	DBE	SUNSHADE-DRIVE,W/MIR,CVR
BCB	CYLINDER UNIT-PASSENGER,DR	C27	WIPER BLADE-WING TYPE	CRS	FRT R/LAMP-W/SUN ROOF S/W	DBF	SUNSHADE-PASS,MIR,W/O CVR
BCD	COVER-L/LAMP,MOLDED COLOR	C28	AIR CON-W/O HEATER CORE	CW1	SWITCH-DOOR LOCK,ELEC	DBH	SUNSHADE-DRIVE,W/MIRROR
BCE	COVER-L/LAMP,BODY COLOR	C2A	WIPER-AUTO CONTROL,REAR	CW8	COVER-SWITCH,KEY COLOR	DBJ	SUNSHADE-W/MIR,W/CVR
BCF	COVER-LICENSE LAMP	C34	AIR FILTER-I/P INLET DUCT	D01	CONSOLE-STANDARD	DBK	S/SHADE-LH:MIR&CVR,RH:MIR
BCP	INSTR PANEL-ACCENT COLOR	C35	HEATER-REAR,LEG ROOM	D02	CONSOLE-DELUXE	DBL	SUNSHADE-W/MIRROR,W/O CVR
BD2	HANDLE-REAR END,BLACK	C36	HEATER-AUXILIARY	D13	ARM REST-FOLDING,CO DR	DBM	S/SHADE-LH:MIR,RH:MIR&CVR
BD5	HANDLE-REAR END,GRAY	C31	DEFLECTOR-SI WINDOW, AIR	D18	ARM REST-STD	DD1	SUNSHADE-VINYL
BD7	HANDLE-REAR END,BODY COLOR	C46	HEATER	D1S	CLUSTER COLOR-ORANGE	DD2	SUNSHADE-CLOTH
BE4	STEPSIDE	C47	DEFOGGER-DELETE	D21	ARMREST-DLX	DD4	MIRROR-CO DR/SI,ELEC OP
BE7	STEP MLDG-STEEL	C49	REAR WINDOW-DEFOGGER	D22	ARM REST-FRT DLX,RR STD	DE0	SUNSHADE-PASS SIDE,W/O MIR
BF9	FLOOR MAT-FRT&RR AUX	C50	REAR WINDOW-DEFOGGER W/TIM	D23	ARM REST-FOLDING	DE2	MIRROR O/S-M/CON,M/FOLD
BH3	HANDLE-DOOR,BLACK	C52	HEATING MAT-REAR SEAT	D26	MIRROR-CO DR/SI,DELETE	DFP	SUNSHADE-FLAP FUNCTION
BH4	HANDLE-DOOR,BODY COLOR	C54	HEATING MAT-FRT SEAT,DRIVE	D31	MIRROR-INSIDE,TILT,RR VIEW	DHC	DOOR I/S HANDLE-Cr TYPE
BH5	HANDLE-DOOR,BRIGHT	C55	REAR WDO-DEFOGGER,WO/TIMER	D33	MIRROR-DR/SI,R/CONTROL	DHF	MIRROR I/S-LT SENS,LAMP
BI1	BEZEL-SPEAKER,SILVER	C58	HEATING MAT-FRT SEAT,CO-DR	D35	MIRROR-INSIDE,CONVENTIONAL	DK0	MIRROR-E/C,M/F,T/S,SILVER
BK1	SHELF-BACK,W/O LID	C59	AIR CON-UNCOMPLETED MANUAL	D38	AUTO DAY & NIGHT MIRROR	DLQ	CONSOLE RR-ENTERTAINMENT
BK2	SHELF-BACK,W/LID	C60	AIR CONDITIONING	D39	MIRROR-CO DR/SI,R/CONT	DLR	MIRROR-E/CONT,P/FOLD,T/SIG
BKN	MOLDING-ROOF, BRIGHT	C81	SWITCH-MAN,SUPPRESSION,PAB	D40	MIRROR-HEATING FUNCTION	DLS	MIRROR-E/CONT,M/FOLD,T/SIG
BLM	DEPOSIT-CARGO AREA	C87	LAMP-ROOF,READING	D49	MIRROR-INSIDE,TILT,LARGE	DM0	MIRROR-M/FOLDING,MANU,RHD
BMS	I.D PLATE-DELETE	C94	LAMP-ROOF,CENTER	D53	CONSOLE RR-FLOOR	DM4	MIRROR O/S-E/CON,P/FOLD
BOA	NAME PLATE-GENTRA	C95	LAMP-ROOF CENTER,DLX	D56	CONSOLE-FRT&RR	DM6	MIRROR-R/CONT,MAN/FOLDING
BS2	BODY SIDE MOLDING-BODY COL	C99	LAMP-MAP, FRONT	D59	SPOILER-RR,INTEG,DECKLID	DM7	MIRROR-ELEC/CONT,MAN/FLDG
BS4	BOOSTER-SINGLE 6"	C9C	PAINT SPECIAL,BLACK	D65	TABLE	DM8	MIRROR-MOLDED COLOR
BS7	BOOSTER-TANDEM 7" + 8"	CA1	CANISTER	D66	PARCEL SHELF-REAR	DM9	MIRROR-BODY COLOR
BS8	BOOSTER-SINGLE 7"	CAF	FILTER-A/C,COMBINATION TY	D69	PARCEL SHELF-REAR,W/STRING	DMA	MIRROR-2 WAY GLASS
BS9	BOOSTER-SINGLE 9"	CAL	CAR ALARM,ANTI-THEFT	D6H	S/SHADE-MIR,CVR,DRV-HLDR	DMB	MIRROR-BLUE GLASS
BSE	REINF-STRUCTURE,BODY	CB1	SUNROOF-COVERING	D6I	S/SHADE-MIR,CV,ILU,DR-HLD	DMC	MIRROR O/S-E/CON,P/FOLD,EC
BXQ	TAPE-EXTERIOR,PILLAR,BLK	CC5	CATALYST CONVERTER	D6J	SUNSHADE-DR,W/O PASS W/MIR	DNB	MIR-LH,M/F M/R,RH,M/F ELC
BYQ	INST PANEL-ALUMINUM	CE9	KOREA-MANDATORY	D6K	SEAT BACK-FOLD,PASS SIDE	DNC	MIR-LH,M/F ELC,RH,M/F M/R
BYR	INST PANEL-WOOD GRAIN,VAR2	CF6	ROOF-SUN,SLIDE,TILT,POWER	D6Q	CLUSTER HOUSING-WOOD GRAIN	DP0	MIRROR-M/FOLDING,POWER,RHD
C09	HEATER-ENGINE BLOCK	CFP	ROOF-SUN,SLD,TILT,PWR,SAFE	D6R	CLUSTER HOUSING-METAL PAINT	DP1	MIRROR-ELE.FLDING,PWR,RHD
C11	DEFROSTER-INTERLOCKING	CJ4	AIR CON-FRT&RR ELEC CONT	D75	TABLE-SEAT BACK,DRIVE	DP3	AUTO DOWN MIRROR-REVERSE
C15	AIR CON-FULL ATC	CJ5	AIR CON-FRT&RR MAN CONT	D76	TABLE-SEAT BACK,PASSENGER	DRF	PAD-SIDE IMPACT,DOOR TRIM
C17	AIR PURIFIER	CLA	CLUTCH-AUTO	D80	LOAD COMPARTMENT-SIDE	DS1	MIRROR-O/S DR MAN REMOTE
C18	AIR QUALITY CONTROL SYSTEM	CLC	CLUTCH-CABLE	DA8	SUNSHADE-LH,W/O TICKET HLD	DS5	MIRROR-O/S DR MAN FOLD,ELE
C19	AIR CON-UNCOMPLETED FATC	CLH	CLUTCH-CRC,HYDRAULIC	DA9	SUNSHADE-LH&RH,TICKET HLD	DSA	SUNSHADE-RR DR,RETRACTABLE
C1X	INST PANEL-METALIC PAINT	CLM	CLUTCH-CSC,HYDRAULIC	DB0	SUNSHADE-LH,W/O VANITY MIR	DSL	SUNVISOR-W/LIGHTING FUNC
C20	VARIABLE SPEED WIPER,FRT	CN3	CANISTER-0.85	DB5	SUNSHADE-RH,W/O VANITY MIR	DSP	DIGITAL SIGNAL PROCESSOR
C22	WIPER-W/O INTERMITTENT	CN4	CANISTER-1.5	DB8	SUNSHADE-LH,VANITY MIRROR	DTR	DAY TIME RUNNING LIGHT
C23	WIPER-W/INTERMITTENT	CN5	CANISTER-1.85	DB9	SUNSHADE-RH,VANITY MIRROR	DVG	CLUSTER COLOR-GREEN
C24	WIPER-RAIN SENSING	CND	CARD HOLDER-I/P	DBC	SUNSHADE-PASS,W/MIR,CVR	DW0	CLUSTER COLOR-SILVER RING

## VII. TABLE OF OPTION CODE

CODE	DESCRIPTION	CODE	DESCRIPTION	CODE	DESCRIPTION	CODE	DESCRIPTION
DZ3	MALT-MANDATORY	FC0	FUEL CUT OFF SWITCH	G13	TRIM LEVEL 13 (VDS)	I34	MIRROR-OUTSIDE,MAN STD
E14	VENEZUELA-MANDATORY	FE2	ELEC CONTROL SUSPENSION	G14	TRIM LEVEL 14 (VDS)	I35	MIRROR O/S-M/CONT,VAR1
E3L	STEPSIDE-DELETE	FFZ	REINFORCE-REAR SEAT,FLOOR	G15	TRIM LEVEL 15 (VDS)	I36	MIRROR O/S-M/CONT,VAR2
E3N	HANDLE-ASSIST,CONSOLE,PASS	FJA	AXLE RATIO-2.61	G16	TRIM LEVEL 16 (VDS)	I68	PEDAL PAD-STAINLESS TYPE
E4F	EQUIPMENT CKD-TAIWAN	FL1	HEAD LAMP-ECE,LHD	G17	TRIM LEVEL 17 (VDS)	ID1	I.D PLATE-TYPE "A-1"
E4G	EQUIPMENT CKD-INDIA	FL2	HEAD LAMP-SAE,LHD	G18	TRIM LEVEL 18 (VDS)	ID2	I.D PLATE-TYPE "E-1"
E4K	EQUIPMENT CKD-VENEZUELA?	FL3	HEAD LAMP-ECE,RHD	G19	TRIM LEVEL 19 (VDS)	IDA	I.D PLATE-TYPE "A"
E4T	EQUIPMENT CKD-THAILAND	FL4	HEAD LAMP-ECE,LHD,PROJ	G20	TRIM LEVEL 20 (VDS)	IDB	I.D PLATE-TYPE "B"
E4V	EQUIPMENT CKD-CHINA	FL5	SIDE REFLECTOR,FRT & RR	G35	AXLE RATIO-3.550	IDD	I.D PLATE-TYPE "D"
E4W	EQUIPMENT CKD-VEITNAM	FL6	SIDE INDICATOR LAMP,FRT	G37	AXLE RATIO-3.737	IDE	I.D PLATE-TYPE "E"
EC1	ECM-HIGH ALTITUDE	FL7	LAMP-REAR COMB,SAE	G38	AXLE RATIO-3.945	IDF	I.D PLATE-TYPE "F"
EC2	ECM-LOW VOLATILITY FUEL	FL8	LAMP-REAR COMB,ECE	G39	AXLE RATIO-3.944	IDH	I.D PLATE-TYPE "H"
ECK	LEVER-AUTO,STRAIGHT,TUTD	FLF	HEAD LAMP-PROJ,SPORTY	G40	AXLE RATIO-4.167	IDJ	I.D PLATE-TYPE "H-1"
ECN	LEVER-AUTO TRANS,STRAIGHT	FLG	HEAD LAMP-PROJECTION TYPE	G41	AXLE RATIO-4.176	IDT	I.D PLATE-TYPE "T"
EEC	EEC/ECE EQUIPMENT	FLH	HEAD LAMP-MFR TYPE	G42	AXLE RATIO-4.124	IDW	I.D BODY-KOREA????????
EGR	EXHAUST GAS RECIRCULATION	FM1	HEAD LAMP-KOREA,LHD	G67	LEVEL CONTROL-AUTO,AIR	IDX	I.D BODY-US-TYPE
EMB	ENGINE IMMOBILIZER	FM6	HEAD LAMP-NON ECE,RHD	G85	AXLE-LIMITED SLIP,FWD	IDY	I.D BODY-EU(ISO)-TYPE
ENB	LEVER-AUTO,STEPGATE,TYPE2	FQ4	AXLE RATIO-3.72	GD2	AXLE RATIO-2.65	JA3	HANDLE-PARK,BRK,REL,CR
EST	EXH PIPE-SINGLE TRIM	FRI	AXLE RATIO-4.26	GEH	GUN EYE-HOOD	JB2	BRAKE DISC-SOLID
EY2	ROOF RACK	FS6	AXLE RATIO-4.063	GH1	GARNISH-TRUNK,BODY COLOR	JB3	BRAKE DISC-VENT
F19	AXLE RATIO-3.824	FTP	FUEL TANK-PLASTIC	GH2	GARNISH-TRUNK,BRIGHT	JB4	BRAKE DISC-VENT,14 INCH
F29	AXLE RATIO-2.82	FTQ	FUEL TANK-PLASTIC,TURBIN	GH3	MANDATORY-SAUDIARBIA	JB5	BRAKE-FRT,DISC,RR,DRUM
F39	SPRING-FRONT & REAR,STD	FTS	FUEL TANK-STEEL	GHL	EQUIPMENT-NORTH AMERICA	JB6	BRAKE-FRT & RR DISC
F40	SPRING-FRT&RR,HEAVY DUTY	FW5	FLUSH WHEEL COVER-15	GHM	EQUIPMENT-OTHERS COUNTRIES	JB9	BRAKE DISC-VENT II
F45	CHASSIS-ESP	FW6	AXLE RATIO-3.42	GM5	AXLE RATIO-3.75	JL5	BRAKE-FRT & RR DISC,ABS
F46	CHASSIS-ALL WHEEL DRIVE	FWD	CHASSIS-FRONT WHEEL DRIVE	GM7	AXLE RATIO-3.91	JL9	BRAKE-ANTI LOCK SYS,W/O ASR
F65	AXLE RATIO-2.40	FWL	AXLE RATIO-4.444	GN5	AXLE RATIO-4.052	JM4	BRAKE-FRT,DISC,RR,DRUM ABS
F67	AXLE RATIO-2.70	FX8	AXLE RATIO-3.611	GN9	AXLE RATIO-4.11	JN1	BRAKE-H TYPE
F73	AXLE RATIO-2.23	FXF	AXLE RATIO-3.26	GPS	NAVIGATION SYSTEM	JN2	BRAKE-X TYPE
F80	AXLE RATIO-4.71	FXG	AXLE RATIO-3.04	GPT	DREAM NET	JTC	TRACTION CONTROL W/ABS
F86	CHASSIS-ESP,VAR2	FZ2	AXLE RATIO-4.357	GS2	AXLE RATIO-3.947	JTP	PLUG-SPARK, IRIIDIUM
FAC	AUTO TEMP DISPLAY-CELS	G01	TRIM LEVEL 1 (VDS)	GS4	AXLE RATIO-3.55	K01	COOLING FAN-ELECTRIC TYPE
FAF	AUTO TEMP DISPLAY-FAHR	G02	TRIM LEVEL 2 (VDS)	GS5	AXLE RATIO-4.405	K02	COOLING FAN-FIXED TYPE
FAK	FIRST AID KIT	G03	TRIM LEVEL 3 (VDS)	GS6	AXLE RATIO-4.225	K08	PRE-AIRCLEANER
FAM	FLOOR-RR DECK,SHORT	G04	TRIM LEVEL 4 (VDS)	GS7	AXLE RATIO-3.979	K13	EXHAUST-FILTER,PARTICLE
FAN	FLOOR-RR DECK,LONG	G05	TRIM LEVEL 5 (VDS)	GSA	GAS SHOCK ABSORBER	K30	CRUISE CONTROL
FAO	PANEL-FRT DECK	G06	TRIM LEVEL 6 (VDS)	GY2	AXLE RATIO-3.847	K70	ALTERNATOR-70A
FAP	PANEL-RR GATE	G07	TRIM LEVEL 7 (VDS)	GY3	AXLE RATIO-4.111	K80	ALTERNATOR-40A
FAQ	PANEL-SIDE GATE,SHORT	G08	TRIM LEVEL 8 (VDS)	HD3	INSULATION-HOOD	K82	ALTERNATOR-85A
FAR	PANEL-SIDE GATE,LONG	G09	TRIM LEVEL 9 (VDS)	HDN	EMBLEM-HOLDEN	K90	ALTERNATOR-95A
FAS	BRACKET-RR LECENSE	G10	TRIM LEVEL 10 (VDS)	HGW	WINDSHIELD HEATED SWITCH	K91	ALTERNATOR-65A
FAT	CHAIN-RR DECK GATE	G11	TRIM LEVEL 11 (VDS)	HL4	HEAD LAMP LEVELING DEVICE	K92	ALTERNATOR-120A
FAW	WARNING TRIANGLE	G12	TRIM LEVEL 12 (VDS)	HW4	HEAD LAMP WASHER SYSTEM	K97	ALTERNATOR-50A

## VII. TABLE OF OPTION CODE

CODE	DESCRIPTION	CODE	DESCRIPTION	CODE	DESCRIPTION	CODE	DESCRIPTION
KEO	WINDOW-MAN,OPERATE,L/GATE	LV6	ENGINE-4 CYL 1.8 SOHC	N43	STEERING WHEEL-2 SPOKE	P25	FLUSH WHEEL COVER-12,NEW
KIL	LAMP-IGNITION LOCK,ILLUM	LX5	ENGINE-4 CYL 1.4 SOHC MPI	N45	STEERING WHEEL-3 SPOKE	P2W	FLUSH WHEEL COVER-SPORT
KKC	CONTROL-INFOTAIN, REMOTE	LX6	ENGINE-4 CYL 1.5 SOHC MPI	N46	STEERING WHEEL-4 SPOKE,STD	PA4	HUBCAPS-STANDARD
KL7	LP GAS OPERATION	M21	TRANS-MAN,4SPD,FLR SHFT,SP	N48	STEERING WHL-LEAT&WD,4SPK	PA5	HUBCAPS-WHEEL
KL9	ALCOHOL OPERATION	M40	TRANSMISSION-AUTO,3 SPEED	N51	STEERING-MANUAL	PC6	WHEEL 6JX16 ALU,DELUXE
KLE	KEYLESS ENTRY SYSTEM	M45	TRANS-CONTINUOUS VARIABLE	N55	STEERING-WHEEL W/O SIR	PC7	WHEEL 6.5JX16 ALU
KLP	REMO CON-ENGINE START	M4S	TRANSAXLE-MAN,D24 S/R	N58	STEERING-WHEEL W/SIR	PCA	TRIM-TEXTILE/LEATHER
KLT	KEY SUPPLY-DUAL	M4W	TRANSAXLE-MAN,D24 W/R	N59	INTERM SHAFT-RIGID	PFE	WHEEL 7JX17 ALUMINUM
KOC	NAME PLATE-TOSCA	M78	TRANSMISSION-MAN,5 VAR 1	N60	INTERM SHAFT-COLLAPSIBLE	PG0	WHEEL 6JX16 ALU,SPORTY
KP2	TIMER-RETAINED,ACCRY,PWR	M79	TRANSMISSION-MAN,5 SPEED	N76	WHEEL 5JX13 - 16 ROUND HL	PG1	WHEEL 6JX15 STEEL
L13	ENGINE-4 CYL 1.3 SOHC MPI	M81	TRANS-MAN,5 SPEED,Y4M	NA5	GUARD-BUMPER,FRONT	PG2	WHEEL 6JX16 ALU
L14	ENGINE-4 CYL 1.4 DOHC MPI	M85	TRANSMISSION-MAN,5 SPD,M/R	NB5	EXHAUST SYSTEM-SINGLE	PG4	WHEEL 5.5JX14 ALU,SPORT
L43	ENGINE-4 CYL 1.5 DOHC MPI	M89	TRANS-MAN,5 SPD,D20 CR	NC2	TRIM RING-MUFFLER	PG8	WHEEL 6JX15 ALU,SPORTY
L44	ENGINE-4 CYL 1.6 DOHC MPI	M90	TRANS-MAN,5 SPD,D20 WR	NCL	STEERING WHL-LEAT,3SPK,DLX	PG9	WHEEL 6JX15 ALU
L76	ENGINE-4 CYL 2.0 SOHC	M92	TRANS-AUTO,4,AW,A4-AF20,ELE	NEF	NET-FLOOR	PL3	WHEEL 4.00BX12 STEEL.
L84	ENGINE-4 CYL 1.8 DOHC MPI	M95	TRANS-MAN,5 SPD,D20 MR	NET	NET-LUGGAGE	PM1	WHEEL 4.5JX13 STEEL
L88	ENGINE-4 CYL 2.0 DOHC MPI	M98	TRANS-AUTO,5SPD,AW,55-51	NF0	NET-PET GUARD/LUGGAGE	PM2	WHEEL 5JX13 STEEL
L90	ENGINE-4 CYL 2.2 DOHC MPI	MA1	LEVER-AUTO TRANS,STEPGATE	NM1	ORVR REQUIREMENT	PNI	PANEL-CARGO SHELF
L95	ENGINE-4 CYL 1.9DIESEL,F9Q	MDA	MOLDING-B/S,UPR,BODY COLOR	NN1	EMISSION-EURO,STAGE III	PPF	PROTECTOR-PAINT,FILM
L96	ENGINE-4 CYL,2.4 DOHC MPI	MDB	MOLDING-B/S,UPR,BLACK	NN2	EMISSION-KOREAN 2000	PQ2	WHEEL 5JX13 ALLOY
LB1	LABEL-KOREAN	MDC	MOLDING-B/S,UPR,BRIGHT	NN4	EMISSION-OP/LOOP,LEADED	PQ3	WHEEL 4.5JX13 ALLOY
LB2	LABEL-ENGLISH	MFL	TRANS-AUTO,4-JATCO,JF405E	NN7	EMISSION-EURO,STAGE II	PS1	PROTECTOR-SIDE
LB3	LABEL-ARAB	MFN	TRANSMISSION-MAN,5,D33,W/R	NN8	EMISSION-CA TLEV	PS2	PROTECTOR-REAR BUMPER
LB4	LABEL-ECE	MFP	TRANSMISSION-MAN,5,D33,M/R	NNA	EMISSION-ECE83,UNLEADED	PS7	PROTECTION BAR-TAILGATE
LB5	LABEL-SPANISH	MFR	TRANSMISSION-MAN,5,D33,M/W	NNB	EMISSION-US83,UNLEADED	PS8	PROTECTION-BODY COLOR
LDA	ENGINE-1.8 4CYL,DOHC,FAM1	MG4	TRANS-MAN,5SPD,CR	NNC	EMISSION-LEV	PS9	PROTECTOR-FRT BUMPER
LE3	ENGINE-DSL,3CYL,1.5SO,CRI	MG5	TRANS-MAN,5SPD,MODIFY CR	NND	EMISSION-ULEV	PSA	PROTECTOR-MOLDED COLOR
LF3	ENGINE-2.0 L6 DOHC MPI	ML4	TRANSMISSION-AUTO,4 SPEED	NNG	EMISSION-FEED BACK,LPG	PX6	WHEEL 51/2JX13-16 ROUND HL
LF4	ENGINE-2.5 L6 DOHC MPI	ML9	TRANSMISSION-AUTO,4SPD,ZF	NNH	EMISSION-FEED BACK,UNLEAD	PX8	WHEEL 5.5JX14 STEEL
LHD	VEHICLE DRIVE-LHD	MLN	TRANS-MAN,5 SPD,D20 WR	NNJ	EMISSION-EURO,STAGE IV	PY4	WHEEL 5.5JX14 ALU,DLX
LLW	ENGINE-DSL,4C,2.0S,CR,110K	MLQ	TRANS-AUTO,4-AISIN,81/80-40	NNK	EMISSION-ULEV II	PZ3	WHEEL 7.5JX18,ALLOY PAINT
LM8	ENGINE-6 CYL 3.2 DOHC MPI	MLS	TRANS-AUTO,4SPD,AISIN,5040	NNP	EMISSION-KLEV	PZ4	WHEEL 5.5JX14 ALU,STD
LMN	ENGINE-DSL,4C,2.0S,CRI,88K	MM9	TRANS-AUTO,4SPD,4HP16	NNQ	EMISSION-KTLEV	Q97	TIRE-P175/70 R 13
LMT	ENGINE-4 CYL 1.0 DOHC MPI	N09	FUEL FILLER CAP LOCK	NP5	STEERING WHEEL-LEATHER	Q98	TIRE-P185/60 R 14
LMU	ENGINE-4 CYL 1.2 DOHC MPI	N10	EXHAUST SYSTEM-DUAL	NQU	EMISSION-KOREAN,ULEV	QAF	TIRE-185/65 R 14
LQ1	ENG-3 CYL 2V 0.8 SOHC,CARB	N19	FUEL LID OPENING-CABLE	NR0	STEERING WHL-LEATHER,4SPK	QB5	WHEEL 6.5JX16 STEEL
LQ2	ENG-3 CYL 2V 0.8 SOHC,MPI	N29	WHEEL 6JX15,ALUMI,SPECIAL	OSS	O2 SENSOR STANDARD	QBP	TIRE-215/50 R 17
LQ3	ENG-3 CYL 4V 0.8 DOHC,MPI	N31	COVER-STRG COLUMN,RHD TYPE	P11	FLUSH WHEEL COVER-S/DLX	QCG	TIRE-235/55 R 18
LQ4	ENGINE-4 CYL 1.0 SOHC	N32	STEERING WHEEL-DLX	P12	FLUSH WHEEL COVER-VAR 1	QIQ	TIRE-225/70 R 16
LQ5	ENGINE-4 CYL 1.2 SOHC	N33	STEERING COLUMN-TILTABLE	P13	FLUSH WHEEL COVER-HI DLX	QIR	TIRE-235/60 R 17
LRD	ENGINE-DSL,4CYL,1.9DO,CRI	N36	STEERING WHL-LEAT,3 SPOKE	P20	WHEEL-STYLED	QQA	TIRE-SPARE,ALLOY WHEEL
LU1	ENGINE-6 CYL 3.2 V6,SFI,GM	N37	STEERING-TILT & TELESCOPIC	P21	FLUSH WHEEL COVER-14	QQL	TIRE-205/55 R 16
LV4	ENGINE-L4 1.8 SOHC,FAM I	N40	STEERING-POWER	P23	FLUSH WHEEL COVER-13	QQM	TIRE-205/65 R 15

## VII. TABLE OF OPTION CODE

CODE	DESCRIPTION	CODE	DESCRIPTION	CODE	DESCRIPTION	CODE	DESCRIPTION
QQR	TIRE-SPARE,REGULAR	RWL	LONG WAVE TYPE-CASSETTE	TBS	TIRE BRAND-BRIDGESTONE	TR1	LAMP-REAR COMB,SPORTY
QQS	TIRE-SPARE,STEEL WHEEL	S12	STARTER-1.2KW	TCP	TRAILER CONNECTION, PROVIS	TR2	LAMP-REAR COMB,STD
QQT	TIRE-SPARE,TEMPORARY	SBM	EQUIPMENT-HEADLAMP,STD	TCS	TRACTION CONTROL SYSTEM	TR3	LAMP-REAR COMB,KOREA
QRI	TIRE-P205/60 R 16	SBN	EQUIPMENT-HEADLAMP,DELUX	TD0	DOOR TRIM	TR8	LAMP-REAR COMB,DELUXE
QRX	TIRE-195/70 R 14	SGS	SEAT BELT-GULF STANDARD	TD1	DOOR TRIM-STD	TRA	LAMP-REAR,ECE W/FOG LAMP
QSC	TIRE-155/80 R 13	SKL	SHIFT KNOB-LEATHER	TD2	DOOR TRIM-DLX	TS8	REFLECTORS/LAMPS-SIDE
QSD	TIRE-145/70 R 13,TUBE	ST8	STARTER-STD	TD3	DOOR TRIM-PAD WELD,VINYL	TT2	HEADLAMP-LWR & HIGH XENON
QTC	TIRE-155/65 R 13	SU3	SUSPENSION,STD	TD4	DOOR TRIM-SUPER DELUXE	TU1	TOUCH-UP PAINT
QTD	TIRE-145/70 R 13	SU4	SUSPENSION,HEAVY	TD5	DOOR TRIM-SIDE IMPACT PAD	TV1	DISPLAY-MONITOR,RR
QTF	TIRE-155 SR 13	SU7	SUSPENSION-ANTI CORROSION	TD6	DOOR TRIM-ULTRA,DELUXE	TVM	TELEVISION SYSTEM
QTI	TIRE-175/60 R 13	SVC	HOLDER-CUP,FRT	TD7	DOOR TRIM-PART FABRIC	TZR	LEATHER-PACKAGE,SPECIAL
QTJ	TIRE-175/70 R 13-80S	T01	LICENSE LAMP-ON TRUNK,ECE	TD8	DOOR TRIM-PART FABRIC DLX	U03	HORN-80
QTL	TIRE-195/55 R 15	T02	LICENSE LAMP-ON TRUNK,SAE	TD9	DOOR TRIM-DLX,VAR 1	U04	HORN-SINGLE
QTN	TIRE-195/60 R 15	T11	LICENSE PLATE,SAE/DOMESTIC	TDF	DR TRIM-FR:FAB-S,RR:QR:VYL	U05	HORN-DUAL
QTR	TIRE-185/70 R 14	T12	LICENSE PLATE,ECE	TDG	DR TRIM-FRT/RR/QTR:VYL-LIN	U07	HORN-FANFARE
QTT	TIRE-215/70 R 16	T1P	EMBLEM-GRILLE,GM-DAEWOO	TDH	DR TRIM-FR:VYL-L,RR:QR:VYL	U12	BRAKE T/M SHIFT INTERLOCK
QTU	TIRE-175/70 R 14	T21	LAMP-TURN SIGNAL,AMBER	TDJ	DR TRIM-FRT/RR/QTR:FAB-STD	U14	CLOCK-DIGITAL,INSTRUMENT
QU3	TIRE-155R12,LT	T22	LAMP-TURN SIGNAL,WHITE	TDK	DR TRIM-FRT/RR/QTR:FAB-DLX	U17	WARNING-DOOR OPEN
QUK	TIRE-185/55 R 15	T25	LAMP-SIDE TURN SIGNAL,ECE	TDL	DOOR TRIM-LEATHER	U19	LAMP-DOOR COURTESY,FRT
QUS	TIRE-185/60 R 14-82H	T26	LAMP-TURN SIGNAL,FRT,ECE	TDP	DR TRIM-FR:FAB-S,Q:VYL	U25	LAMP-LUGGAGE COMPARTMENT
QVH	TIRE-155/70 R 13	T27	LAMP-TURN SIGNAL,FRT,SAE	TDQ	DR TRIM-FR:FAB-D,Q:VYL	U27	LAMP-GLOVE BOX
QVS	TIRE-5.00-12-6PR	T28	LAMP-TURN SIGNAL,FRT	TDS	DOOR TRIM-SPORTY	U2K	DIGITAL AUDIO SYS-S BAND
R79	OCTANE NO.79	T32	LAMP-BACK UP	TFG	LAMP-FOG,PROJECTION	U20	PANEL CENTER-IP,SILVER
R83	OCTANE NO.83	T34	LAMP-BACK UP,ECE	TFK	ALARM-SEAT BELT WARNING	U30	INDICATOR-GAS/LIQUID CHG
R87	OCTANE NO.87	T40	LAMP-REAR,ECE W/O FOG LAMP	TFM	ALARM-SEAT BELT WARNING, LH	U32	CLOCK-DIGITAL,IP
R91	OCTANE NO.91	T42	LAMP-LICENSE,ECE	TFN	ALARM-SEAT BELT WARNING, RH	U37	CIGAR LIGHTER
R95	OCTANE NO.95	T43	SPOILER-REAR,STANDARD	TGQ	LANGUAGE CONTROL-ENGLISH	U38	CIGAR LIGHTER-FRONT
RBJ	BODY STYLE-SHORT TRUCK	T45	SPOILER-REAR,HATCHBACK	THS	PLAYER-DVD CHANGE	U39	INSTRUMENT-SPD TACHO,DLX
RBK	BODY STYLE-LONG TRUCK	T46	SPOILER-RR,H/B,SPORTY	TIM	INDICATOR-TPMS	U3F	DISPLAY LANGUAGE-ENGLISH
RBM	BODY STYLE-BUS TYPE	T48	AUTO LIGHT CONTROL SYS	TJ2	EQUIPMENT CKD-COLOMBIA	U41	INDICATOR-LOW FUEL
RBN	BODY STYLE-G/VAN TYPE	T53	LAMP-ROOM,2 POINT SW	TL0	DEPOSIT BOX-TRUNK	U44	SPEED WARNING DEVICE
RBP	BODY STYLE-P/VAN TYPE	T54	LAMP-ROOM,3 POINT SW	TLB	TRUNK LID HDL-BODY COLOR	U47	NEUTRAL STARTER-CLUTCH
RC2	REMOTE CONTROL S/W-STRG	T5R	LOCKING CONT-SAFETY RR S/B	TLC	TIRE BRAND-LOCAL	U51	INDICATOR-HAZARD LAMP
RDS	RADIO DATA SYSTEM-CASSETTE	T67	BATTERY-70AH	TLD	TRUNK LID HDL-Cr COATING	U58	RADIO-AM/FM STEREO
REF	NEW REFRIGERANT(R-134a)	T8A	DOOR SW,ROOM LAMP-FRT R/L	TM4	BATTERY-45AH,LOW	U61	INDICATOR-DOOR OPEN
RHD	VEHICLE DRIVE-RHD	T8B	DOOR SW,ROOM LAMP-FRT L	TM7	BATTERY-66AH,MF	U63	DISPLYER-OUTSIDE TEMP
RMR	ROOF RACK-BLACK	T8C	DOOR SW,ROOM LAMP-RR	TM8	BATTERY-90AH	U64	SPEAKER-9,PREMIUM
RTL	TRIM-TRUNK LID	T8D	DOOR SW,ROOM LAMP-B/DOOR	TMS	BATTERY SAVER	U67	INDICATOR-DAYTIME R/LIGHT
RTS	TRIM-TRUNK,STD	T93	LAMP-C.H.M. STOP	TN6	BATTERY-55AH	U68	DISPLAY-DRIVER,INFO,CTR
RW1	RADIO WAVE-1st TYPE	T96	LAMP-FOG,FRONT	TNA	BATTERY-35AH	U72	ANTENNA-DIVERSITY
RW2	RADIO WAVE-2nd TYPE	T97	LAMP-FOG,INTEGRATED IN BPR	TND	BATTERY-28AH	U73	ANTENNA-ROD
RW3	RADIO WAVE-3rd TYPE	T98	LAMP-FOG,REAR	TNH	BATTERY-55AH,HIGH	U75	ANTENNA-POWER
RW4	RADIO WAVE-4th TYPE	TA0	TETHER ANCHORAGE	TNP	BATTERY-60AH	U77	ANTENNA-MAST

## VII. TABLE OF OPTION CODE

CODE	DESCRIPTION	CODE	DESCRIPTION	CODE	DESCRIPTION	CODE	DESCRIPTION
U83	SPEAKER-COAXIAL 2 WAY	UCY	RADIO-NAVIGATION DLX	US2	RADIO-AM/FM,DVD,NAVI	VA5	RADIATOR-STD
U85	CLOCK-DIGITAL W/TEMP.DSPLY	UCZ	RADIO-NAVIGATION PREMIUM	US5	SPEAKER,TWEETER	VA6	RADIATOR-HEAVY DUTY
U86	CLOCK-DIGITAL W/O D BUTTON	UD6	SENSOR-DETECT,PASS SIDE	US6	SPEAKER,FRT-STD	VA7	RADIATOR-HEAVY DUTY,2
U90	SPEAKER-4EA	UD7	SENSOR-REAR PARKING ASSIST	US7	SPEAKER,FRT-DLX	VB1	BUMPER-MOLDED COLOR
U93	SPEAKER-6EA	UE1	GRAPHIC EQUALIZER	US8	SPEAKER,RR-STD	VB2	BUMPER-BODY COLOR
U96	SPEAKER-7EA,CUSTOM	UE2	DISPLAY-GRAPHIC,INFO(GID)	UT3	ANTENNA-RR WINDOW,RADIO	VB3	BUMPER-MASKING TYPE
U97	SPEAKER-9,CUSTOM	UF6	DIMMER-INSTRUMENT CLUSTER	UT4	ANTENNA,REAR-MANUAL	VB4	GULF STATES-MANDATORY
U98	SPEAKER-10,DELUXE	UFR	SENSOR-FRT&RR,OBST,DETECT	UT5	ANTENNA,REAR-POWER	VB5	BUMPER-BODY COLOR,VAR 1
UA0	ANTI-THEFT SYSTEM	UIP	ULTRA INTERIOR PROTECTION	UT8	ANTENNA-ROOF	VC1	EMBLEM-CHEVROLET
UA2	FUEL FILLER DOOR-MANUAL	UK6	RADIO CONTROL-REAR SEAT	UT9	ANTENNA-ROOF,SHORT	VC2	BPR RR-STEP,SUS,BODY&ACNT
UA4	THEFT DETENT-EUROPE	UL1	JACK-EXTRA POWER,CONSOLE	UTA	ANTENNA-ROOF,PHONE,DAS	VC3	EMBLEM-HOOD
UA9	HORN-80,NON E-MARK	UL2	JACK-EXTRA POWER,LUGGAGE	UTB	ANTENNA-ROOF,PHONE,DAS,GPS	VC7	EMBLEM-TAILGATE,NORMAL
UAB	DISPLAY-TIME,DATE,TEMP,RAD	ULC	CIGAR LIGHTER-RR, CONSOLE	UTC	ANTENNA-ROOF,RADIO,PHONE	VD2	BPR RR-STEP,BLK,BODY&ACNT
UAC	DISPLAY-IP,BOARD INFO(BID)	UM1	IMMOBILIZER	UV7	AMP-POWER	VDW	LETTERING-DAMAS
UAJ	DISPLAY-COLOR,INFO(CID)	UM2	CASSETTE-LW/AM/FM,RDS,DTCH	UV8	AMP-POWER,VAR1	VEK	VENTILATOR-SIDE,RH
UAK	RADIO-AM/FM STREO,CDP	UN1	CASSETTE-AM/FM STO ETR,STD	UVC	CAMERA-REAR VIEW	VEV	SKID PLATE-MOLDED COLOR
UAS	MONITOR-REAR,REMOTE CONT	UN2	CASSETTE-AM/FM STO ETR,DLX	UW1	POWER MODE TELLTALE	VEY	SKID PLATE-SILVER COLOR
UAU	LANGUAGE CONTROL-KOREAN	UN3	CASSETTE-LW/AM/FM STO ETR	UW3	FUZZY MODE CONTROL	VF6	BUMPER RR-STEP
UAV	AV SYSTEM	UN6	CASSETTE-AM/FM STO ETR,H/D	UWA	TELEPHONE-PROV,W/VOICE	VG1	BUMPER-FRT/RR STD
UAX	HANDS FREE KIT	UN8	BLANK COVER-AUDIO	UWB	TELEPHONE-PROV,W/O VOICE	VGN	BUMPER FRT-MOLD,CLR,WIDE
UAY	RADIO-AM/FM,CDC 6,MP3	UNA	CASSETTE-AM/FM ST ETR,BASE	UX4	SPEAKER-8EA, BASE	VGO	BUMPER FRT-U/BODY,L/ACNT
UAZ	RADIO-AM/FM,CDC 6,MP3,RDS	UNB	BLANK-AUDIO,W/FRAME	UX5	SPEAKER-8EA,DLX	VGP	PROTECTOR-IMP,PEDESTRAIN
UB0	AUDIBLE WARNING CHIME	UND	ANTENNA-RADIO,DELETE	UX9	SPEAKER-2,CUSTOM	VH4	MUD GUARD-FRT & RR
UB1	IND,CHIME BELL-S/BELT WARG	UNE	BLIND-CASSETTE,W/ WHS&ANT	UXA	SPEED SENSITIVE PWR STRG	VHG	PROTECTOR-FRT SEAT,SI,IMPT
UB2	CHIME BELL-HEAD LAMP	UNG	BLANK COVER-AUDIO,W/FRAME	UZ4	KEY REMINDER	VIO	PANEL CENTER-IP,ALUMINIUM
UB4	WARNING BUZZER-HEADLAMP	UNH	CASSETTE-EQUALIZER,STD	UZ9	KEY INTERLOCK SYSTEM	VJ4	GUARD-CABIN BACK
UB6	CLUSTER COLOR-BLUE	UNK	BLANK-AUDIO	V09	BEZEL-BLACK COLOR	VMB	BUMPER FRT-MOLDED,ALL
UB8	WARNING SYSTEM-VOICE	UP0	DEPOSIT-IP,W/LID	V10	BEZEL-BODY COLOR	VMG	BPR RR-STEP,SUS,BODY&MOLD
UBD	ANALOG CLUSTER-DLX	UP1	CD CHANGER SYSTEM	V13	GRILLE-HEADLAMP,MOLDED CLR	VMH	BPR RR-STEP,MOLD,BODY&MOLD
UBE	ANALOG CLUSTER-EL TYPE	UP3	CD CHANGER PROVISION	V14	GRILLE HEADLAMP,BODY CLR	VMJ	BUMPER RR-MOLDED
UBF	ANALOG CLUSTER-EL,MILES	UPK	RADIO-ETR,EQU,CD,MP3,S/DIN	V17	GRILLE-RADIATOR,CR COATING	VMU	BUMPER FRT-U/BODY,L/MOLD
UBG	HORN-80,ECE	UPX	RADIO-ETR,EQU,CD,MP3,D/DIN	V18	GRILLE-HEADLAMP,BLACK CLR	VN0	VIN-VISUAL
UBH	RADIO-AM/FM,CASS,DVD,TV	UQD	RADIO-ETR,CAS,CDC,MP3,D/D	V20	GRILLE-RADIATOR,BODY COLOR	VN1	VIN-COMMON
UBS	ANALOG CLUSTER-STD	UQE	RADIO-AM/FM,CD,RDS,S/DIN	V21	GRILLE-RADIATOR,MESH TYPE	VN2	VIN-NTA/WVTA
UBT	DIGITAL AUDIO SYS-TEXT	UQP	SPEAKER-10,PREMIUM	V22	RAD GRILLE-LATTICE TYPE	VN5	VIN-UZ COMMON
UC0	SPEEDOMETER-KILOMETERS	UR4	ASHTRAY-REAR	V25	RAD GRILLE-LATTICE TYPE,CR	VN6	VIN-UZ NTA/WVTA
UC1	SPEEDOMETER-MILES	UR5	ASHTRAY-FRONT	V33	GRILLE-HEADLAMP	VT0	BUMPER-2.5M,VAR1
UCF	RADIO-CD,TEL,MP3,VOICE,GPS	UR7	ASHTRAY	V3E	ROOF RACK-SILVER	VT1	BUMPER-5 MPH
UCG	RADIO-CD,TEL,MP3,VOICE CON	UR8	ASHTRAY-W/LAMP	V85	FIRE EXTINGUISHER-BRACKET	VT2	BUMPER-2.5 MPH
UCH	RADIO-AM/FM,CD,MP3	URA	RADIO-AM/FM,CD,ETR,W/O RSA	V86	FIRE EXTINGUISHER	VT3	BUMPER-FRT 5MPH,RR 2.5MPH
UCJ	RADIO-MCD,TEL,MP3,VOIC,GPS	URC	UNDER COATING	V87	FIRE EXTINGUISHER-ASM	VT5	BUMPER-PLASTIC,COLOR KEYED
UCK	RADIO-AM/FM,MCD	US0	SPEAKER,RR-DLX	VA3	RADIATOR-ELECTRIC TYPE	VT8	BUMPER-ACCENT COLOR
UCX	RADIO-NAVIGATION STD	US1	RADIO-AM/FM,CD,NAVI	VA4	RADIATOR-FIXED TYPE	VT9	BUMPER-FRT 5M,RR 2.5M,VAR1



## VII. TABLE OF OPTION CODE

CODE	DESCRIPTION	CODE	DESCRIPTION	CODE	DESCRIPTION	CODE	DESCRIPTION
VTX	DEPOSIT-IP,WO/LID	W6V	TRIM-CLOTH,FLOCKING	WDQ	LETTERING-LUX 16	WQM	LETTERING-PAYLOAD&GVWR
VUW	DEPOSIT-IP CENTER,VAR1	W6W	TRIM-CLOTH,STANDARD,VAR 1	WDS	LETTERING-MAX 16	WQN	LETTERING-DAMAS SUPER
VUX	DEPOSIT-IP CENTER,VAR2	W6X	TRIM-CLOTH,DELUXE,VAR 2	WDW	NAME PLATE-VIVA	WQP	LETTERING-PAYLOAD
W11	NO. OF PASSENGER-7	W8K	CD PLAYER-DLX	WGD	WOOD GRAIN-DELUXE	WQQ	LETTERING-SIDE DECO DLX
W12	NO. OF PASSENGER-5	W8M	CD PLAYER-W/MP3	WGL	INST PANEL-WOOD GRAIN	WQR	LETTERING-LABO
W13	NO. OF PASSENGER-2	W8N	CD CHANGER-IN DASH 5	WGM	INST PANEL-METALLIC COLOR	WQS	LETTERING-LABO DELUXE
W2B	LETTERING-SUPREME	W8R	CASSETTE-EQUALIZER,HI DLX	WGN	INST PANEL-BLACK	WQT	LETTERING-LABO SUPER
W2K	LETTERING-BEST	W8S	EQUALIZER-CASSETTE	WGP	METALLIC PAINT	WQU	LETTERING-LIBIG DLX
W2P	LETTERING-EVANDA	W8V	CD PLAYER	WGR	WOOD GRAIN	WQV	LETTERING-LIBIG
W2Q	LETTERING-MAX	W9M	WHEEL-BLACK	WGS	METALLIC GRAIN	WQW	LETTERING-CLASSIC,GOLD
W2R	LETTERING-PRESTIGE	W9U	WHEEL-SILVER	WGU	METALLIC GRAIN VAR2	WQX	LETTERING-CLASSIC,CR
W2V	LETTERING-EQUIP VAR,DELETE	WAL	NAME PLATE-AVEO	WJ3	LETTERING-DELUXE	WQY	LETTERING-EAGLE,CR
W36	LETTERING-CDXI	WAN	NAME PLATE-AVEO 5	WL6	LETTERING-EX	WR1	NAME PLATE-REZZO
W3R	LETTERING-LUXURY	WAO	NAME PLATE-WAVE	WLP	LETTERING-PLATINUM	WR2	NAME PLATE-TACUMA
W3S	LETTERING-SX	WAP	NAME PLATE-SWIFT+	WM4	NAME PLATE-MATIZ	WWA	LETTERING-LTZ
W3T	LETTERING-CDX	WAQ	NAME PLATE-KALOS	WM5	NAME PLATE-SPARK	WZA	EMBLEM-ZAZ
W4G	BLACK TAPE-UNDER W/S	WAT	NAME PLATE-KALOS V	WP1	LETTERING-ME	X11	ASTERISK(*) MARK
W4H	BLACK TAPE-UNDER B/GLASS	WAU	LETTERING-ROMANCE	WP2	LETTERING-MS	X1A	PACKAGE-SALES TOP I
W4J	BLACK TAPE-FRT DR SIDE	WAV	NAME PLATE-LACETTI	WP3	LETTERING-MD	X1B	PACKAGE-SALES TOP II
W4L	LETTERING-CD	WAW	NAME PLATE-NUBIRA	WP4	LETTERING-MX	X1C	PACKAGE-SALES TOP IV
W4U	LETTERING-S	WAX	NAME PLATE-OPTRA	WP5	LETTERING-SL	X1D	PACKAGE-SALES TOP V
W4V	LETTERING-SE	WAY	NAME PLATE-FORENZA	WP6	LETTERING-VL	X1E	PACKAGE-TOP TANK,600 Lit
W5D	LETTERING-CAR NAME VAR.1	WAZ	NAME PLATE-VIVANT	WP7	LETTERING-VG	X1F	PACKAGE-TOP TANK,490 Lit
W5E	LETTERING-CAR NAME VAR.2	WBO	NAME PLATE-EVANDA	WP8	LETTERING-LS	X1G	PACKAGE-REFRIGERATION,AL
W6A	TRIM-CLOTH,W/PIPING	WBR	NAME PLATE-EPICA	WP9	LETTERING-LD	X1H	PACKAGE-REFRIGERATION,FRP
W6B	TRIM-CLOTH,J/WOVEN,VAR 1	WBX	NAME PLATE-VERONA	WPA	LETTERING-DAEWOOD	X1J	PACKAGE-DUMP
W6C	TRIM-CLOTH,STANDARD	WC4	MUFFLER-STANDARD	WPM	LETTERING-ML	X1K	PACKAGE-GARBAGE
W6D	TRIM-VINYL DR & CLOTH SEAT	WC6	MUFFLER-HEAVY DUTY	WPN	LETTERING-CHEVROLET	X1L	PACKAGE-INSULATION TOP I
W6E	TRIM-CLOTH,DELUXE	WCC	CD CHANGER	WPP	LETTERING-LP	X1M	PACKAGE-POWER GATE
W6F	TRIM-CLOTH,SUPER SPORT	WCM	LETTERING-LT	WPS	LETTERING-SPECIAL	X1N	PACKAGE-DRY VAN
W6G	TRIM-CLOTH,SUPER DELUXE	WCN	LETTERING-C	WQ1	LETTERING-EAGLE,GOLD	X1P	PACKAGE-INSULATION TOP II
W6H	TRIM-CLOTH,ULTRA DELUXE	WCO	LETTERING-M	WQA	LETTERING-SIDE DECO	X81	PACKAGE-A
W6J	TRIM-CLOTH,J/WOVEN	WCS	LETTERING-EXCLUSIVE	WQB	NAME PLATE-DAMAS	X82	PACKAGE-B
W6K	TRIM-VINYL	WCT	LETTERING-EK	WQC	LETTERING-DAMAS DELUXE	X83	PACKAGE-C
W6L	TRIM-CLOTH,DELUXE,VAR 3	WCU	LETTERING-MK	WQD	LETTERING-DAMAS LIBIG	X85	PACKAGE-E
W6M	TRIM-CLOTH,DOUBLE RASCHEL	WCW	LETTERING-DK	WQE	LETTERING-DAMAS V	X86	PACKAGE-COLOR
W6N	TRIM-CLOTH,DELUXE,VAR 1	WCX	LETTERING-X	WQF	LETTERING-DAMAS V DELUXE	X87	PACKAGE-F
W6P	TRIM-CLOTH,HALF	WCY	LETTERING-LK	WQG	LETTERING-DAMAS V SUPER	X88	PACKAGE-G
W6Q	TRIM-LEATHER,STD	WCZ	LETTERING-ECO	WQH	LETTERING-ATTIVO	XA1	SOUTH AFRICA-MANDATORY
W6R	TRIM-LEATHER	WDD	LETTERING-DIAMOND	WQI	LETTERING-ATTIVO DELUXE	XA7	WASHER-NOZZLE,HEAT,W/S
W6S	TRIM-CLOTH,S/SPORT VAR 1	WDJ	LETTERING-CITY	WQJ	LETTERING-ATTIVO SUPER	XAF	AFRICA-MANDATORY
W6T	TRIM-CLOTH,LUX,STD	WDK	LETTERING-JOY	WQK	LETTERING-ATTIVO V	XAG	MANDATORY-ANGOLA,LEADED
W6U	TRIM-CLOTH,VINYL SEAT	WDL	LETTERING-SUPER	WQL	LETTERING-LPG	XAL	ALGERIA-MADATORY

## VII. TABLE OF OPTION CODE

CODE	DESCRIPTION	CODE	DESCRIPTION	CODE	DESCRIPTION	CODE	DESCRIPTION
XAN	ARGENTINA-MANDATORY	XIN	INDONESIA-MANDATORY	XPK	PAKISTAN-MANDATORY	ZH4	TRIM LEVEL #4
XAR	AUSTRIA-MANDATORY	XIQ	IRAQ-MANDATORY	XPL	POLAND-MANDATORY	ZH5	TRIM LEVEL #5
XAT	AUSTRALIA-MANDATORY	XIR	IRAN-MANDATORY	XPR	PUERTO RICO-MANDATORY		
XBN	BRUNEI-MANDATORY	XIT	ITALY-MANDATORY	XPU	PERU,LEADED-MANDATORY		
XBR	BRAZIL-MANDATORY	XJ6	JAPAN-MANDATORY	XRA	ISRAEL-MANDATORY		
XBT	PACKAGE-BEST	XJR	JORDAN-MANDATORY	XRM	RUMANIA-MANDATORY		
XBU	BULGARIA-MANDATORY	XK0	REST PROVISION-CHILD SEAT	XRU	RUSSIA-MANDATORY		
XBX	BENELUX-MANDATORY	XK1	CHILD LOCK-REAR DOOR	XS3	PACKAGE-SE+		
XCA	EQUIPMENT-COLD AREA	XK6	NORWAY-MANDATORY	XSL	SLOVENIA-MANDATORY		
XCE	CHILE-MANDATORY	XK7	CALIFORNIA	XSM	EMS SYSTEM-SIEMENS		
XCH	CHINA-MANDATORY	XKA	BADGE-CHEVROLET	XSN	SPAIN-MANDATORY		
XCI	C.I.S-MANDATORY	XKB	BADGE-PONTIAC	XSP	STYLE PACKAGE		
XCK	STD CORROSION SPEC	XKC	BADGE-DAEWOO	XSQ	SPORT PACKAGE,VAR 1		
XCO	COLOMBIA-MANDATORY	XKD	BADGE-SUZUKI	XSR	SRILANKA-MANDATORY		
XCP	HEAVY DUTY CORROSION SPEC	XKE	BADGE-BUICK	XST	SPORT PACKAGE		
XCR	CROATIA-MANDATORY	XKP	PACKAGE-KOREA ELEC POWER	XSU	SUDAN-MADATORY		
XCT	COSTA RICA-MANDATORY	XKT	PACKAGE-KOREA TELECOM	XSV	SLOVAK-MANDATORY		
XDM	DENMARK-MANDATORY	XKZ	KAZAKHSTAN-MANDATORY	XSW	SWITZERLAND-MANDATORY		
XDP	EMS SYSTEM-DELPHI	XL5	TAIWAN-MANDATORY	XSX	SYRIA-MANDATORY		
XEC	CZECHO-MANDATORY	XLA	LATIN AMERICA-MANDATORY	XTK	TURKEY-MANDATORY		
XED	ECUADOR-MANDATORY	XLB	LEBANON-MANDATORY	XTL	THAILAND-MANDATORY		
XEE	EQUIPMENT-EAST EUROPE	XLD	DRIVING LICENSE PACKAGE	XUK	U.K-MANDATORY		
XEG	EGYPT-MANDATORY	XLH	LITHUANIA-MANDATORY	XUR	UKRAINE-MANDATORY		
XEL	EL SALVADOR-MANDATORY	XLP	LEATHER PACKAGE	XUZ	UZBEK-MANDATORY		
XEP	E-MODEL PACKAGE	XLQ	NVH REDUCTION ITEMS	XVN	VAN PACKAGE		
XES	ESTONIA-MANDATORY	XLV	LATVIA-MANDATORY	XVT	VIETNAM-MANDATORY		
XFE	U.S.A.-MANDATORY	XM2	LUMBAR SUPPORT-DRIVER SEAT	XWA	WESTERN AFRICA-MANDATORY		
XFN	FINLAND-MANDATORY	XM3	LUMBAR SUPPORT-CO DR,SEAT	XWD	SWEDEN-MANDATORY		
XFR	FRANCE-MANDATORY	XMA	MALAYSIA-MANDATORY	XWE	EQUIPMENT-WEST EUROPE		
XG0	ADD.BRAKE PEDAL	XME	MANDATORY-MEXICO	XWS	WESTERN SAMOA-MANDATORY		
XG1	ADD.BRAKE & CLUTCH PEDAL	XML	IMPEDIMENT LEFT HAND	XX1	SPECIAL ORDER BUILD		
XG2	EQUIPMENT-ROAD TRAINING	XMN	MACEDONIA-MANDATORY	XY1	BUY BACK-INDIA PLANT		
XG3	GOVERNMENT-SPECIAL ORDER	XMO	MOROCCO-MANDATORY	XY2	BUY BACK-RUMANIA PLANT		
XG7	PACKAGE-PATROL CAR	XMP	IMPEDIMENT HANDLE KIT	XY3	BUY BACK-CHINA PLANT		
XG9	PACKAGE-MOVING BANK	XMR	IMPEDIMENT LEFT ACCEL KIT	XYM	YEMEN-MANDATORY		
XGC	GCC-MANDATORY	XMS	IMPEDIMENT STRG KIT	XZ1	BUY BACK-TRANS,INDIA PLT		
XGT	GUATEMALA-MANDATORY	XMY	MYANMAR-MANDATORY	XZ2	BUY BACK-TRANS,RUMANIA PLT		
XGU	GUAM-MANDATORY	XNA	NIGERIA-MANDATORY	XZ3	BUY BACK-TRANS,CHINA PLT		
XHA	EQUIPMENT-HOT AREA	XND	INDIA-MANDATORY	Y99	SALES HANDLING PACKAGE		
XHG	HUNGARY-MANDATORY	XNZ	NEW ZEALAND-MANDATORY	ZH0	TRIM LEVEL #0		
XHK	HONG KONG-MANDATORY	XP1	TAXI VAR 1-S/BOARD & METER	ZH1	TRIM LEVEL #1		
XHU	HUNGARY-MANDATORY(DUP.XHG)	XP7	NAME PLATE-BARINA,RR	ZH2	TRIM LEVEL #2		
XIC	ICELAND-MANDATORY	XPH	PHILIPPINE-MANDATORY	ZH3	TRIM LEVEL #3		

## VIII. ABBREVIATIONS

CODE	DESCRIPTION	CODE	DESCRIPTION	CODE	DESCRIPTION
1ST	FIRST	EXPN	EXPANSION	RAD	RADIATOR
2ND	SECOND	EXTN	EXTENSION	RECL	RECLINER,-ING
3RD	THIRD	F/PNL	FLOOR PANEL	REF	REFRIGERANT
A	ASSEMBLY	FDG	FEEDING	REINF	REINFORCEMENT
A/C	AIR CONDITIONER,-ING	FLR	FLOOR	REV	REVERSE
A/T	AUTO TRANSMISSION	FRT	FRONT	RKE	REMOTE KEY(ENTRY SYSTEM)
ABS	ANTI LOCK BRAKE SYSTEM	FWD	FORWARD	RR	REAR
ACCEL	ACCELERATOR	G/S	GEAR SHIFT	RTN	RETURN
AL	ALUMINIUM	HARN	HARNES	S/ABS	SHOCK ABSORBER
ATAS	ANTI THEFT ALARM SYSTEM	HYD	HYDRAULIC	S/BACK	SEAT BACK
ATC	AUTO TEMPERATURE CONTROL	I/MANIF	INTAKE MANIFOLD	S/BELT	SEAT BELT
AUX	AUXILIARY	I/P	INSTRUMENT PANEL	S/COL	STEERING COLUMN
BTSI	BRAKE TRANSMISSION SHIFT INTERLOCK	I/S	INSIDE	S/W	SWITCH
C/G	CROSS GROOVE	IACV	IDLE AIR CONTROL VALVE	SDM	SENSING & DIAGNOSTIC MODULE
C/MBR	CROSS MEMBER	IGN	IGNITION	SECD	SECONDARY
C/V	CONSTANT VELOCITY	INCL	INCLUDING	SHF	SHAFT
CATAL CONV	CATALYTIC CONVERTER	INL	INLET	SIR	SUPPLEMENTAL INFLATE RESTRAINT
CD	COMPACT DISC	INR	INNER	SOL	SOLENOID
CLU	CLUTCH	INST	INSTRUMENT	STD	STANDARD
CM/SHF	CAM SHAFT	INT	INTAKE	STRG	STEERING
CMPR	COMPRESSOR,-SION	INTER	INTERMEDIATE	SUCT	SUCTION
CNSL	CONSOLE	L/COMPT	LOAD COMPARTMENT	SUPT	SUPPORT,-ING
COMB	COMBINATION	L/PLATE	LICENSE PLATE	SYN	SYNCHRONIZER
COMPL	COMPLETE	LONGI	LONGITUDINAL	T/A	TRANSAXLE
COMPT	COMPARTMENT	LWR	LOWER	T/BODY	THROTTLE BODY
CONN	CONNECTING,-TOR,-NECT	M/T	MANUAL TRANSMISSION	T/GATE	TAIL GATE
CONT	CONTROL	MANIF	MANIFOLD	T/LID	TRUNK LID
CONV	CONVERTER	MAP	MANIFOLD AIR PRESSURE	T/M	TRANSMISSION
CPS	CRANK POSITION SENSOR	MAT	MANIFOLD AIR TEMPERATURE	T/P	TRI POT
CR/SHF	CRANK SHAFT	MBR	MEMBER	T/SIG	TURN SIGNAL
CTR	CENTER,-RAL	MOD	MODULE	TCC	TORQUE CONVERTER CLUTCH
CUSH	CUSHION	MT	MOUNTED,-ING	TCM	TRANSMISSION CONTROL MODULE
CYL	CYLINDER	NEU	NEUTRAL	TEMP	TEMPERATURE
DIFF	DIFFERENTIAL	NSBU	NEUTRAL START BRAKE UNIT	THER	THERMAL
DIR	DIRECT,-TION	O/S	OUTSIDE,OVERSIZE	TILT	TILTABLE
DIS	DIRECT IGNITION SYSTEM	OBD	ON BOARD DIAGNOSTIC	TRK	TRUNK
DISTR	DISTRIBUTOR,-TION	OPG	OPENING	TXV	THERMAL EXPANSION VALVE
DLX	DELUXE	OTLT	OUTLET	U/S	UNDER SIZE
DMP	DAMPING,-PER	OTR	OUTER	UPR	UPPER
DR	DOOR	P/BRAKE	PARKING BRAKE	VENT	VENTILATED,TION,-TOR
DRL	DAY TIME RUNNIN LIGHT	P/STRG	POWER STEERING	VGIS	VARIABLE GAS INDUCTION SYSTEM
E/MANIF	EXHAUST MANIFOLD	P/WDO	POWER WINDOW	W/	WITH
ECM	ELECTRONIC CONTROL MODULE	PARK	PARKING	W/H	WHEEL HOUSE
ECU	ELECTRONIC CONTROL UNIT	PASS	PASSENGER	W/HARNES	WIRING HARNESS
EGR	EXHAUST GAS RECIRCULATION	PCB	PRINTED CIRCUIT BOARD	W/SHIELD	WINDSHIELD
ELEC	ELECTRIC,-CAL	PNL	PANEL	W/STRIP	WEATHER STRIP
ENG	ENGINE	PRIM	PRIMARY	WDO	WINDOW
ENGY	ENERGY	PROTV	PROTECTIVE	W/O	WITHOUT
EXH	EXHAUST	PWR	POWER		